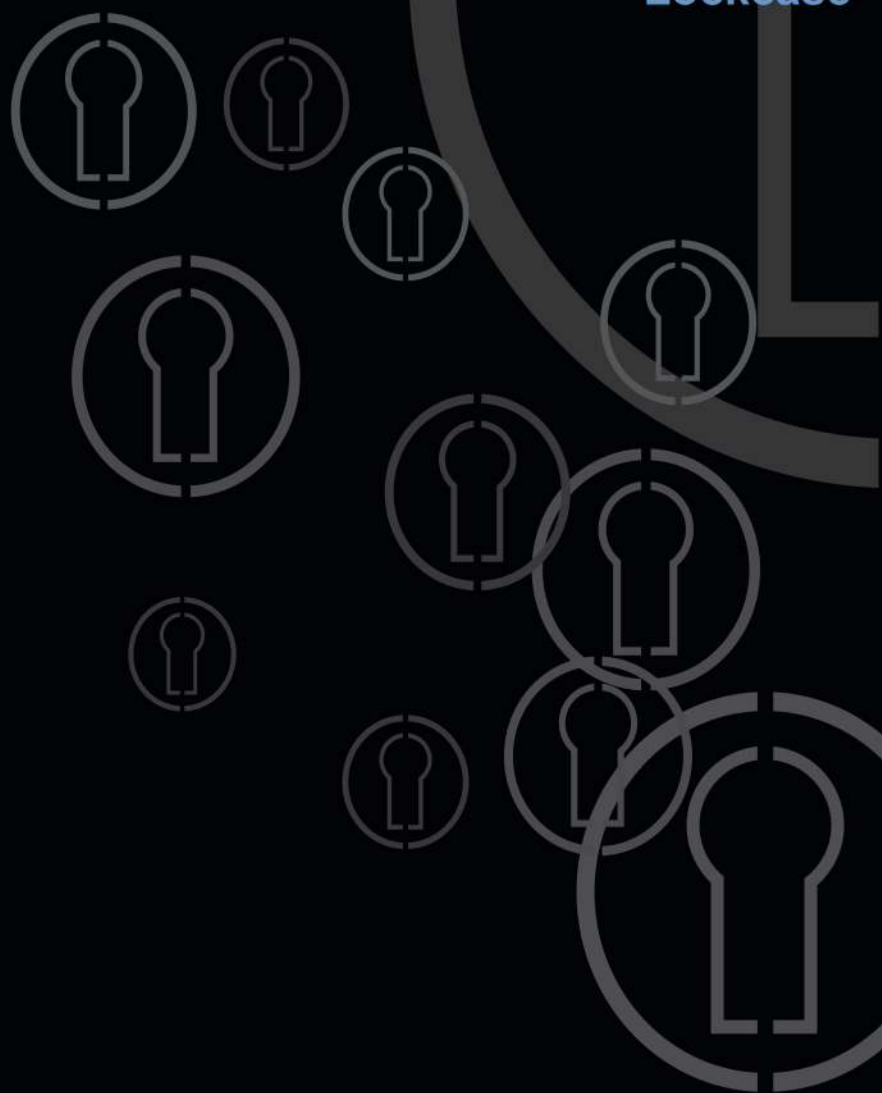




Lockcase



A B S - SINGAPORE • KUALA LUMPUR • JAKARTA • HONG KONG • GUANZHOU • SHANGHAI • BEIJING

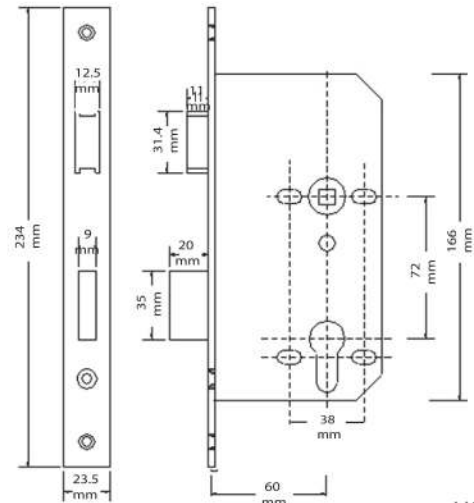
A woman with dark hair tied back, wearing a light blue strapless dress, is holding a dark, cylindrical door handle. She is looking directly at the camera with a slight smile. The background is a blurred interior space with vertical lines, possibly a door or window frame. The text "Security- It's in Our Hands" is overlaid on the image in a black, sans-serif font.

Security-
It's in Our Hands



- Stainless Steel Latch Bolt and Dead Bolt
- Satin Stainless Steel 304 Forend Plate
- Dead Bolt of 20mm for High Security Purpose
- High Quality Springs In Latch
- Bolt Through Fixing Holes
- Reversible Latch
- Up to 4 Hours Fire Rated
- Available in Satin Stainless Steel 316 Forend Plate and High Spring Tension
- Conform to SS 332:2007
- Conform to BS EN 12209
- Comform to BS476; Part 22
- Comform to **BS EN 1634 -1: 2008**
- Comform to **BS EN 1363 -1: 1999**

11206/60mm Sash Lock w Strike Plate & Box

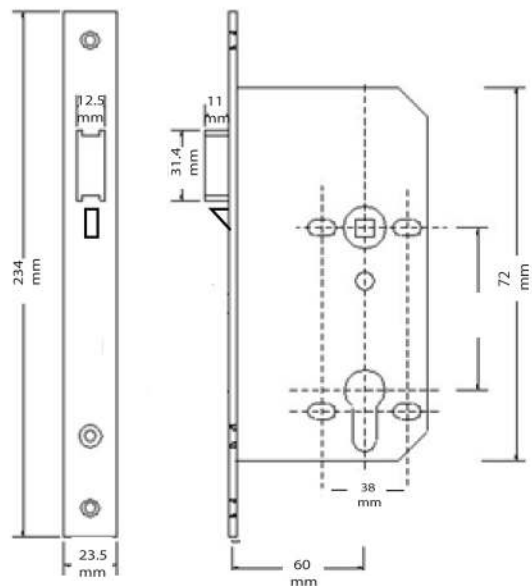


LKAB 00796



- Stainless Steel Latch Bolt
- Satin Stainless Steel 304 Forend Plate
- High Quality Springs In Latch
- Bolt Through Fixing Holes
- Reversible Latch
- Up to 4 Hours Fire Rated
- Available in Satin Stainless Steel 316 Forend Plate and High Spring Tension
- Conform to SS 332:2007
- Conform to BS EN 12209
- Comform to BS476; Part 22

11206/60mm Night Latch w Anti-trust, Strike Plate & Box

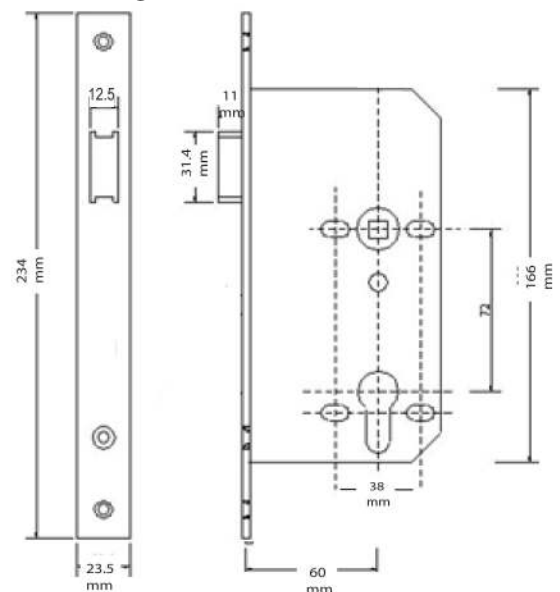


LKAB 00789



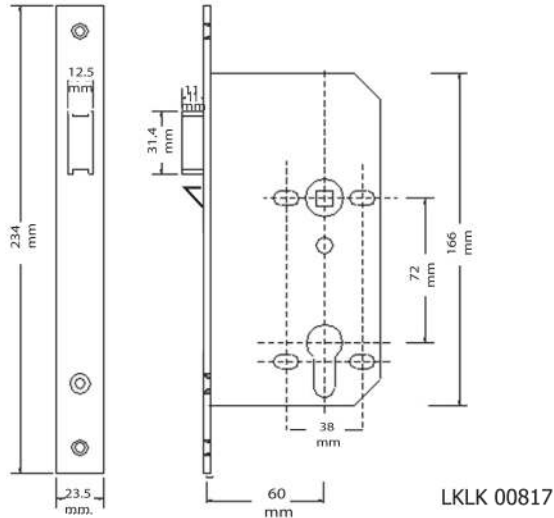
- Stainless Steel Latch Bolt
- Satin Stainless Steel 304 Forend Plate
- High Quality Springs In Latch
- Bolt Through Fixing Hole
- Reversible Latch
- Up to 4 Hours Fire Rated
- Available in Satin Stainless Steel 316 Forend Plate and High Spring Tension
- Conform to SS 332:2007
- Conform to BS EN 12209
- Comform to BS476; Part 22

11206/60mm Passage Lock w Strike Plate & Box



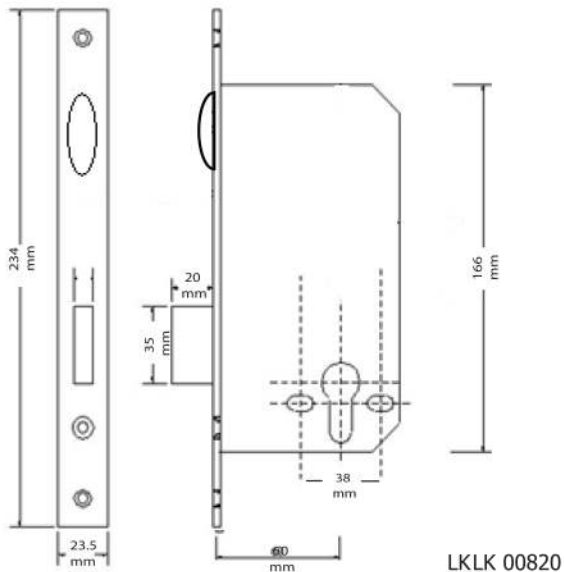
LKDH 00782

11206/60mm Classroom Lock w Strike Plate & Box



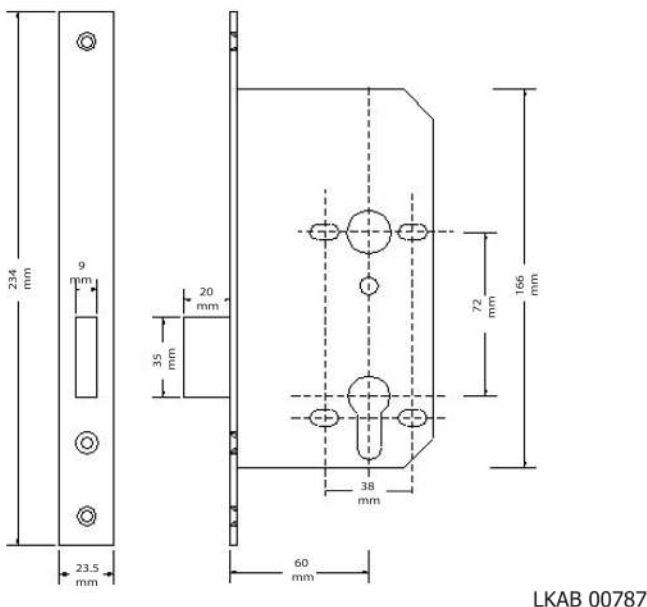
- Stainless Steel Latch Bolt
- Satin Stainless Steel 304 Forend Plate
- High Quality Springs In Latch
- Bolt Through Fixing Holes
- Reversible Latch
- Up to 4 Hours Fire Rated
- Conform to SS 332:2007
- Conform to BS EN 12209
- Comform to BS476; Part 22

11206/60mm Roller Latch w Dead Bolt Lock w Strike Plate & Box



- Stainless Steel Ball Catch and Dead Bolt
- Satin Stainless Steel 304 Forend Plate
- Dead Bolt of 20mm for High Security Purpose
- Bolt Through Fixing Holes
- ½ Hour Fire Rated
- Conform to SS 332:2007
- Conform to BS EN 12209

11206/60mm Dead Lock w Strike Plate & Box



- Stainless Steel Dead Bolt
- Satin Stainless Steel 304 Forend Plate
- Available in Satin Stainless Steel 316 Forend Plate and
- High Spring Tension
- Conform to SS 332:2007
- Conform to BS EN 12209



Technical drawing of a mechanical part showing front and top views with dimensions.

Front View (Top):

- Total height: 120 mm
- Top section height: 25 mm
- Bottom section height: 70 mm
- Bottom section width: 60 mm
- Bottom section features a central circular hole and a small square feature above it.

Top View (Bottom):

- Width: 15.5 mm

Technical drawing of a rectangular plate with the following dimensions and features:

- Overall width: 47 mm
- Overall height: 70 mm
- Top flange width: 24 mm
- Overall height including flange: 100 mm
- Distance from bottom edge to hole center: 38 mm
- Distance from left edge to hole center: 60 mm
- Distance from right edge to hole center: 85 mm
- Hole diameter: 23 mm

Technical drawing of a sliding door assembly, showing three views: front, side, and top. Dimensions are given in millimeters.

Front View (Left):

- Overall height: 105.5 mm
- Overall width: 23 mm
- Top handle hole diameter: 10 mm
- Top handle hole offset from top edge: 10 mm
- Bottom handle hole diameter: 10 mm
- Bottom handle hole offset from bottom edge: 10 mm
- Distance between handle holes: 47 mm
- Distance from top edge to bottom handle hole: 50 mm
- Distance from bottom edge to bottom handle hole: 30 mm
- Distance from top edge to top handle hole: 30 mm

Side View (Middle):

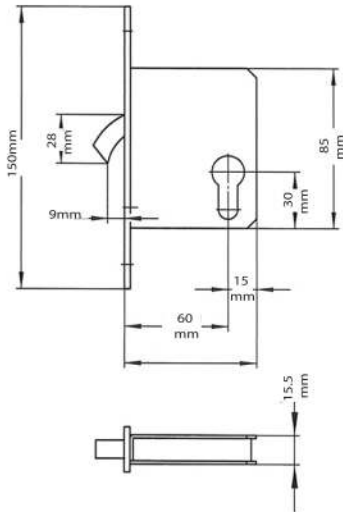
- Overall height: 105.5 mm
- Overall width: 23 mm
- Top handle hole diameter: 10 mm
- Top handle hole offset from top edge: 10 mm
- Bottom handle hole diameter: 10 mm
- Bottom handle hole offset from bottom edge: 10 mm
- Distance between handle holes: 47 mm
- Distance from top edge to bottom handle hole: 50 mm
- Distance from bottom edge to bottom handle hole: 30 mm
- Distance from top edge to top handle hole: 30 mm

Top View (Right):

- Overall width: 105.5 mm
- Overall height: 23 mm
- Top handle hole diameter: 10 mm
- Top handle hole offset from top edge: 10 mm
- Bottom handle hole diameter: 10 mm
- Bottom handle hole offset from bottom edge: 10 mm
- Distance between handle holes: 47 mm
- Distance from top edge to bottom handle hole: 50 mm
- Distance from bottom edge to bottom handle hole: 30 mm
- Distance from top edge to top handle hole: 30 mm

- Satin Stainless Steel 304 Forend Plate
- Stainless Steel Latch Bolt
- Bolt Through Fixing Holes

11306/60mm Hook Lock w Strike Plate & Box Suitable for Sliding Door

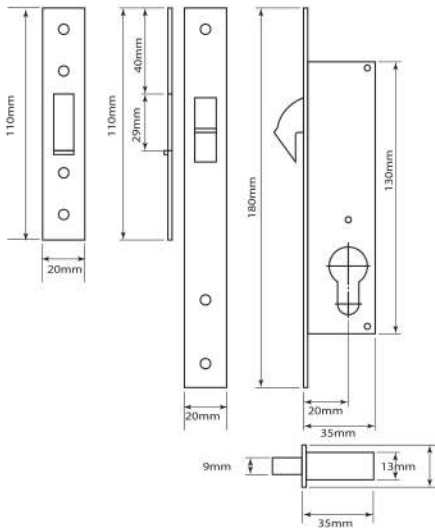


LKAB 01397



- Satin Stainless Steel 304 Forend Plate
- Stainless Steel Latch Bolt
- Bolt Through Fixing Holes

11306/20mm Hook lock w Strike Plate & Box Suitable for Sliding Door

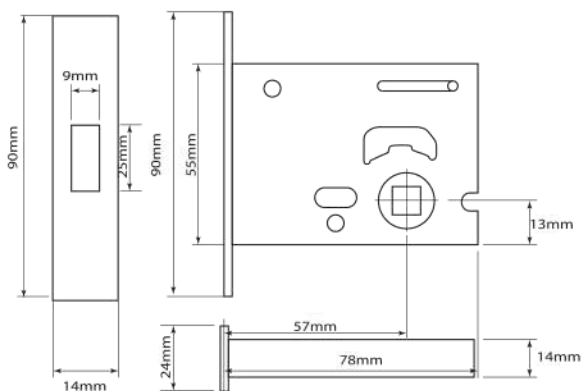


LKAB00794

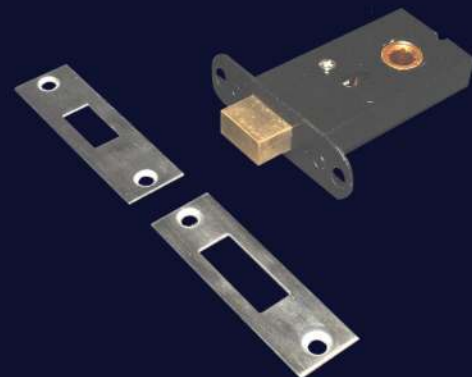


- Satin Stainless Steel 304 Forend Plate
- Stainless Steel Latch Bolt
- Bolt Through Fixing Holes

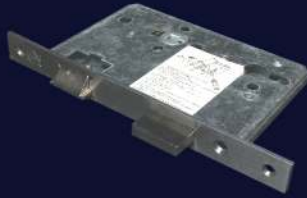
11406/55 55mm Dead Lock w Strike Plate & Box Suitable for Toilet Indicator



IDLK00539

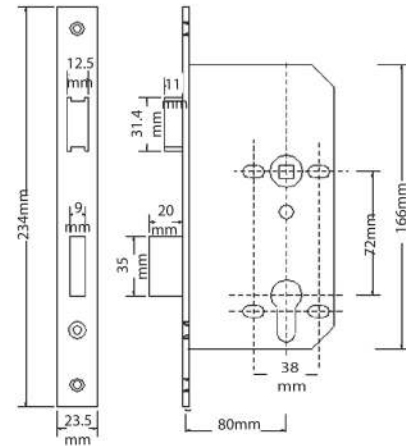


- Satin Stainless Steel 304 Forend Plate
- Stainless Steel Latch Bolt
- Bolt Through Fixing Holes

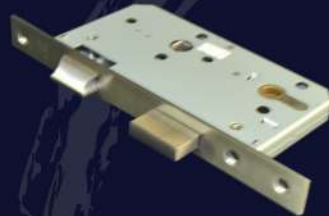


- Stainless Steel Latch Bolt and Dead Bolt
- Satin Stainless Steel 304 Forend Plate
- Dead Bolt of 20mm for High Security Purpose
- High Quality Springs In Latch
- Bolt Through Fixing Holes
- Reversible Latch
- Up to 4 Hours Fire Rated
- Available in Satin Stainless Steel 316 Forend Plate and
- High Spring Tension
- Conform to SS 332:2007
- Conform to BS EN 12209
- Comform to BS476; Part 22

11206/80mm Sash Lock w Strike Plate & Box

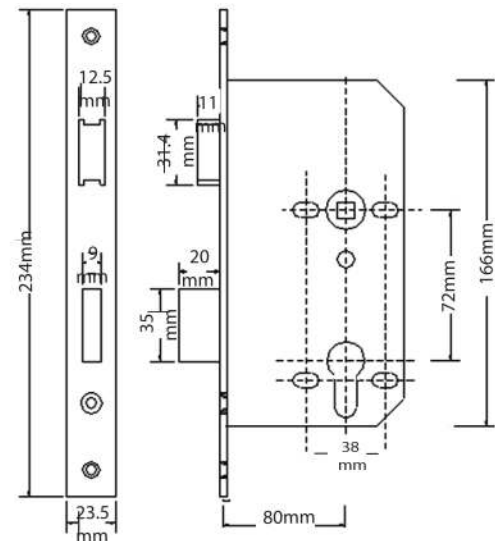


LK DH00785



- Stainless Steel Latch Bolt and Dead Bolt
- Satin Stainless Steel 304 Forend Plate
- Dead Bolt of 20mm for High Security Purpose
- High Quality Springs In Latch
- Bolt Through Fixing Holes
- Reversible Latch
- Up to 4 Hours Fire Rated
- Available in Satin Stainless Steel 316 Forend Plate and
- High Spring Tension
- Conform to SS 332:2007
- Conform to BS EN 12209
- Comform to BS476; Part 22

11206/60mm Escape Bathroom Lock w Strike Plate & Box

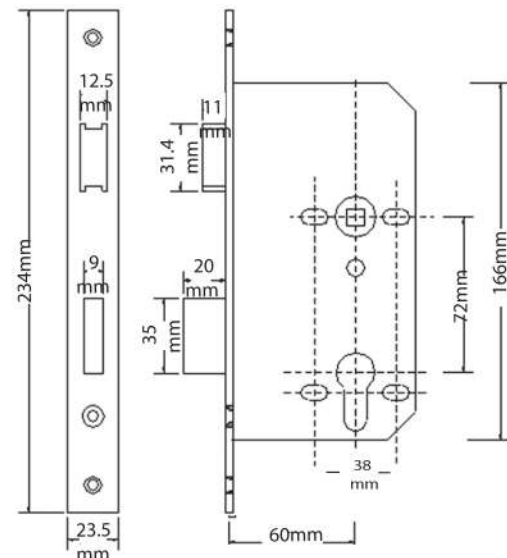


LK DH00795



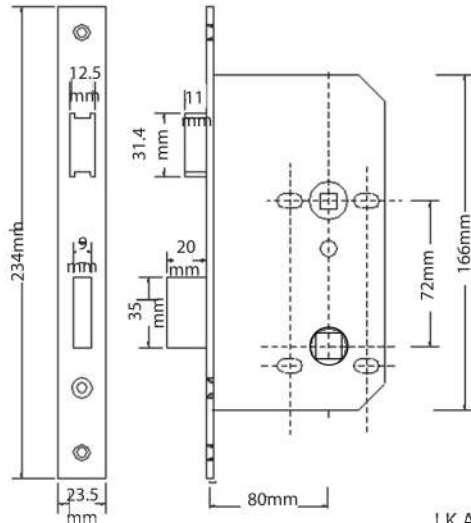
- Stainless Steel Latch Bolt and Dead Bolt
- Satin Stainless Steel 304 Forend Plate
- Dead Bolt of 20mm for High Security Purpose
- High Quality Springs In Latch
- Bolt Through Fixing Holes
- Reversible Latch
- Up to 4 Hours Fire Rated
- Available in Satin Stainless Steel 316 Forend Plate and
- High Spring Tension
- Conform to SS 332:2007
- Conform to BS EN 12209
- Conform to BS476; Part 22

11206/60mm Escape Entrance Lock w Strike Plate & Box



LKAB00791

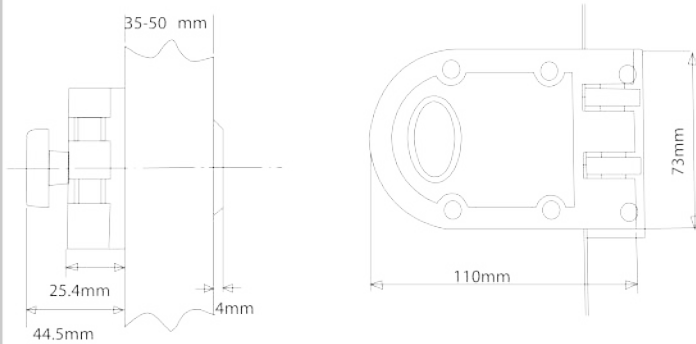
11206/60mm Bathroom Lock w Strike Plate & Box



LK AB00793

- Stainless Steel Latch Bolt and Dead Bolt
- Satin Stainless Steel 304 Forend Plate
- Dead Bolt of 20mm for High Security Purpose
- High Quality Springs In Latch
- Bolt Through Fixing Holes
- Reversible Latch
- Up to 4 Hours Fire Rated
- Available in Satin Stainless Steel 316 Forend Plate and
- High Spring Tension
- Conform to SS 332:2007
- Conform to BS EN 12209
- Comform to BS476; Part 22

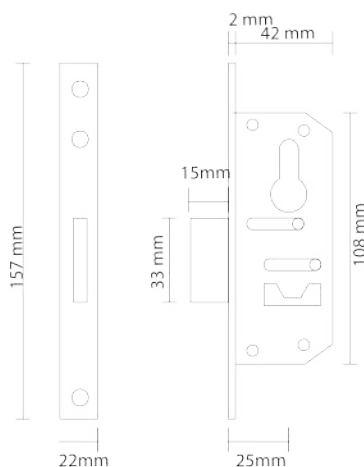
Jimmy Proof Lock w Thumbturn 3 Keys w Strike Plate & Box in Satin Finish



Grey : LKAB00849
Satin : LKAB00850

- Zinc die-cast case, steel base internal components with zinc plated finish
- Single Cylinder and self-locking performance
- Good guard against theft, high security

Narrow Stile Deadlock w Strike Plate & Box

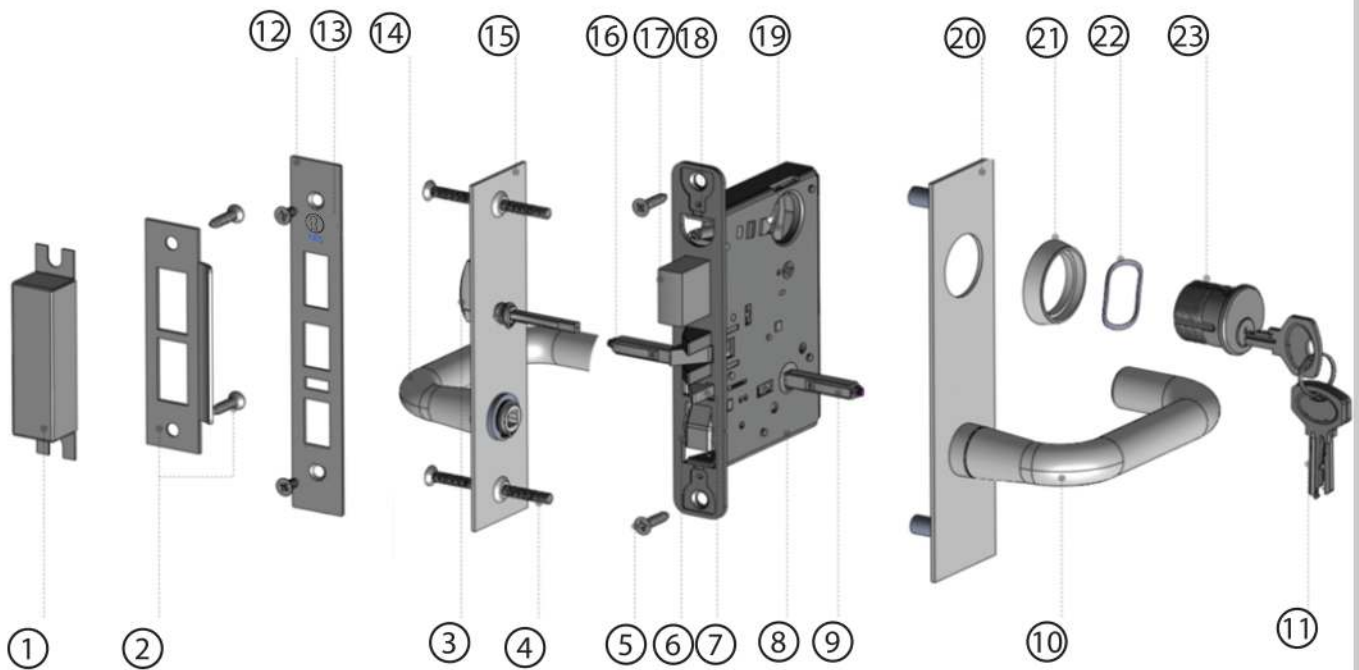


LKAB12053

- Stainless Steel 304 Forend Plate
- Stainless Steel Latch Bolt
- Backset 25mm

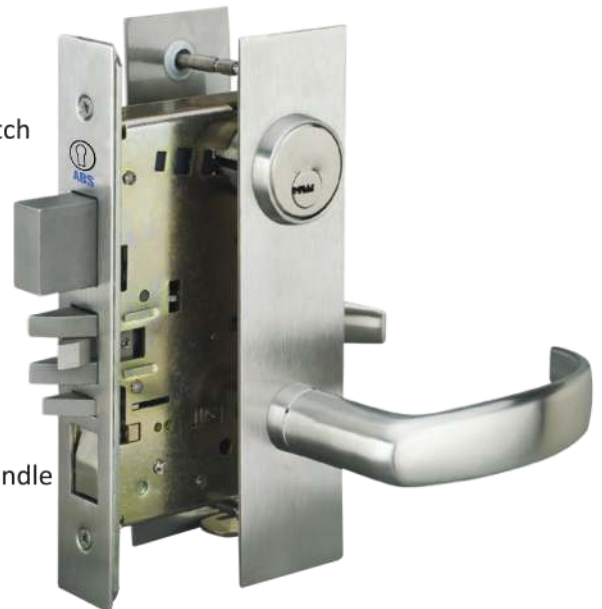
ANSI Lockcase



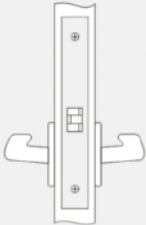
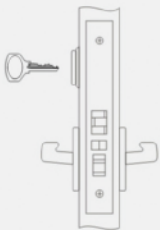
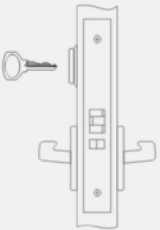

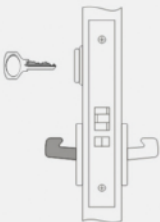


Configuration

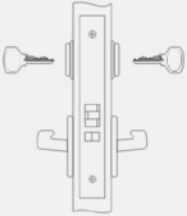
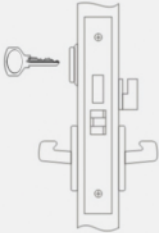

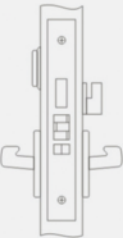
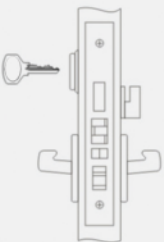
1. Carbon Steel strike box
2. SUS304 stainless steel strike plate and screw
3. Investment casting SUS304 stainless steel thumb turn
4. Escutcheon installation screw
5. Lockcase installation screw
6. Passage and entrance function switching by pushing the toggle switch
7. Non-handed auxiliary deadlatch
8. 2.5mm lockcase cover protect internal configuration to achieve ANSI Grade 1 standard requirements
9. 8x8mm patent spindle design prevent lever sagging
10. Investment casting SUS304 stainless steel outside handle
11. 2.3mm ABS specified nickel silver brass key can be masterkeyed
12. 1.5mm SUS304 stainless steel front plate
13. ABS logo
14. Investment casting SUS304 stainless steel in 2mm SUS304 inside handle
15. 2mm SUS304 stainless steel inside escutcheon
16. Investment casting SUS304 stainless steel latchbolt
17. Investment casting SUS304 stainless steel deadbolt assembly with harden anti-drilling insert
18. Cylinder fixing screw
19. Standard ANSI cylinder hole dimension
20. 2mm SUS304 stainless steel outside escutcheon
21. SUS304 stainless cylinder collar
22. Carbon compression spring to make sure no clearance between cylinder and the collar
23. Solid brass cylinder with anti-drill system



Function

Picture	Function	Model no.	Description
	Passage Lock	NAM26-E71 (ANSI F01)	<ul style="list-style-type: none"> • Latchbolt retracted by lever either side at anytime. • Both Levers are always active.
	Entrance Lock	NAM26-E74 (ANSI F04)	<ul style="list-style-type: none"> • Latchbolt retracted by lever either side , unless outside lever is locked by toggle or projection of deadbolt. • Deadbolt operated by key outside or by thumb turn inside. • Auxiliary deadlatch deadlocks latchbolt. • Both levers are always active.
	Classroom Lock	NAM26-E75 (ANSI F05)	<ul style="list-style-type: none"> • Latchbolt retracted by lever inside or by key outside. • Auxiliary deadlatch deadlocks latchbolt. • Inside lever always active.
	Classroom Dead Lock	NAM26-E76 (ANSI F29)	<ul style="list-style-type: none"> • Deadbolt retracted by key outside. • Deadbolt retracted by thumb turn outside only.
	Storeroom Lock	NAM26-E77 (ANSI F07)	<ul style="list-style-type: none"> • Latchbolt retracted by lever inside or by key outside. • Outside Lever always rigid. • Auxiliary latch deadlocks latchbolt. • Inside lever always active.

Function

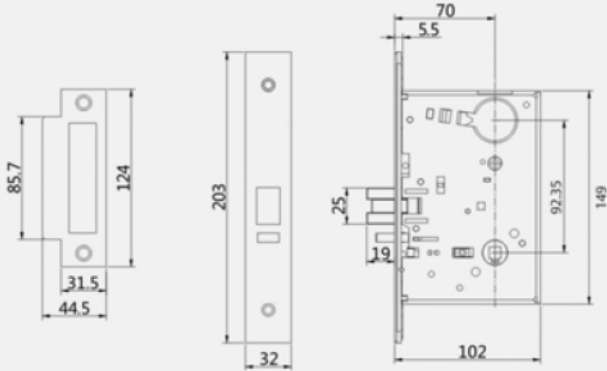
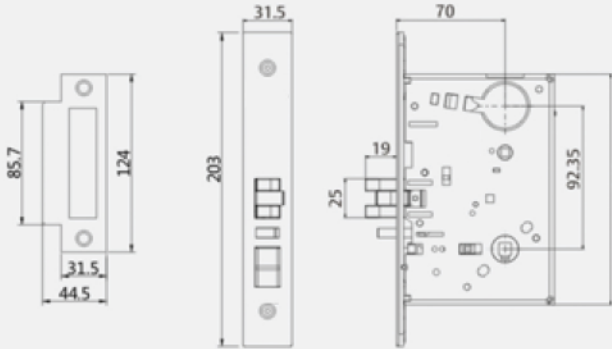
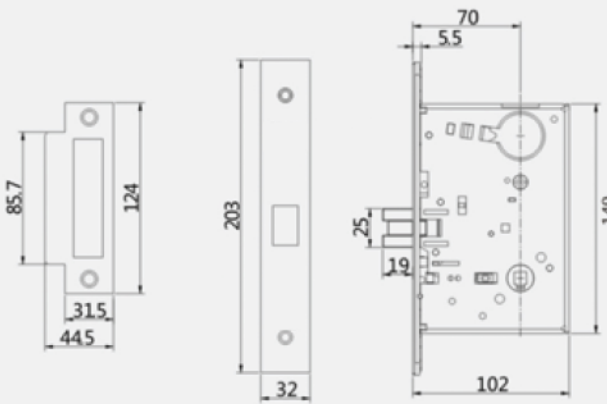
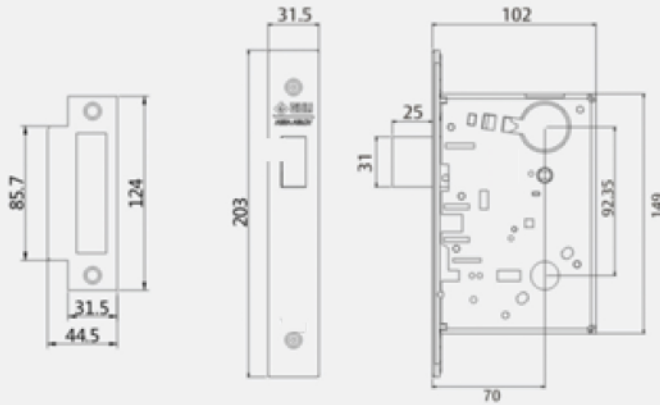
Picture	Function	Model no.	Description
	Apartment Exit Lock	NAM26-E79 (ANSI F09)	<ul style="list-style-type: none"> • Latchbolt retracted by lever either side, unless outside lever is locked by key inside. • Latchbolt retracted by key outside or by lever inside when outside lever is locked. • Auxiliary deadlatch deadlocks latchbolt. • Inside lever always active.
	Dormitory Exit Lock	NAM26-E7D (ANSI F13)	<ul style="list-style-type: none"> • Latchbolt retracted by lever either side . • Deadbolt operated by key outside or by thumb turn inside. • Inside lever retracts latchbolt and deadbolt simultaneously(Anti-Panic) • When deadbolt is projected,outside lever is automatically locked.
	Dead Lock	NAM26-E7H (ANSI F17)	<ul style="list-style-type: none"> • Deadbolt operated by key outside or thumb turn inside.
	Privacy Bedroom or Bathroom Lock	NAM26-E7K (ANSI F19)	<ul style="list-style-type: none"> • Lever outside retracts latchbolt except when deadbolt is projected. • Lever inside retracts both latchbolt and deadbolt simultaneously,and unlocks outside lever. • Emergency release retracts and projects deadbolt by coin or flat blade screw driver. • Thumb turn retracts and projects deadbolt.
	Passage Lock	NAM26-E7L (ANSI F20)	<ul style="list-style-type: none"> • Latchbolt retracted by lever either side, unless outside lever is locked by toggle or by projection of deadbolt. • Deadbolt operated by key outside or by thumb turn inside. • Inside lever retracts latchbolt and deadbolt simultaneously(anti-panic). • Outside leverremains locked. • Auxiliary deadlatch deadlocks latchbolt.

Specification

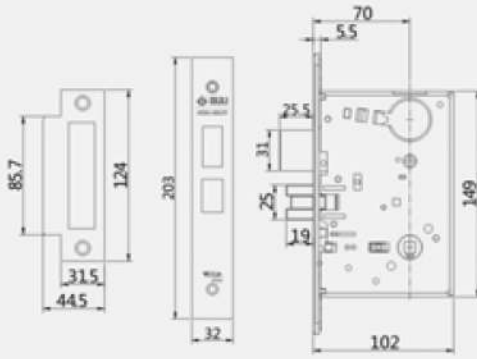
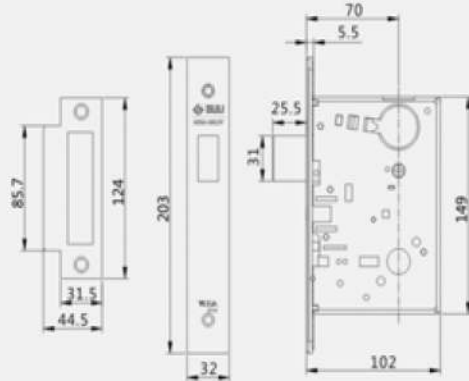
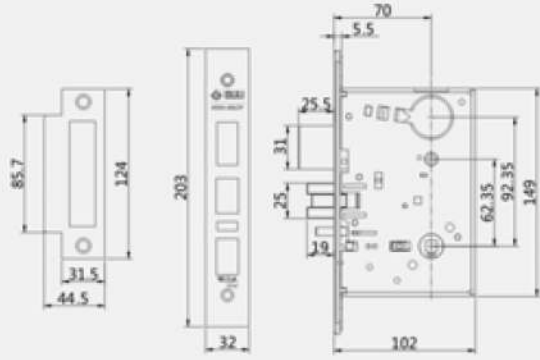
- **Standard :**
ANSI/BHMA A156.13-2005 Grade 1
more than 1 million life cycle and comply to Chinese GB21556-2008 and QB/T 2474-2000 standard
- **Fire-rated standard:**
Chinese GB12955-2008. suitable for all type of fire door
- **Function :**
With 8 different functions
Suitable for all public building
For example, subway station, office, school, hospital, air port and commercial center
- **Patent :** Lock case patent No.: ZL200620055132.5; Spindle patent no.: 200820093839.4
- **Lock case cover :** 2.5mm carbon steel
- **Center to Center :** 92.35mm
- **Backset :** 70mm
- **Door thickness :** 40-70mm
- **Applicable door type :** Wood door/metal door
- **Front plate :** 32x203x3mm, SUS304 stainless steel
- **Strike plate :** SUS304 stainless steel
- **Latchbolt :** Investment casting SUS304 stainless steel. easy reverse
- **Deadbolt :** Investment casting SUS304 stainless steel
- **Spindle :** 8x8mm split spindle
- **Finish :** Satin stainless steel
- **Door handing :** Left-hand, left-hand reverse bevel, right-hand and right-hand reverse bevel

Category	Model No.	Function	Backset
Passage Lock	NAL26-E71	ANSI F01	70mm
Entrance Lock	NAL26-E74	ANSI F04	70mm
Classroom Lock	NAL26-E75	ANSI F05	70mm
Classroom Deadlock	NAL26-E76	ANSI F29	70mm
Storeroom Lock	NAL26-E77	ANSI F07	70mm
Apartment Exit Lock	NAL26-E79	ANSI F09	70mm
Dormitory Exit Lock	NAL26-E7D	ANSI F13	70mm
Deadlock	NAL26-E7H	ANSI F17	70mm
Privacy Bedroom or Bathroom Lock	NAL26-E7K	ANSI F19	70mm
Passage Door Lock	NAL26-E7L	ANSI F20	70mm

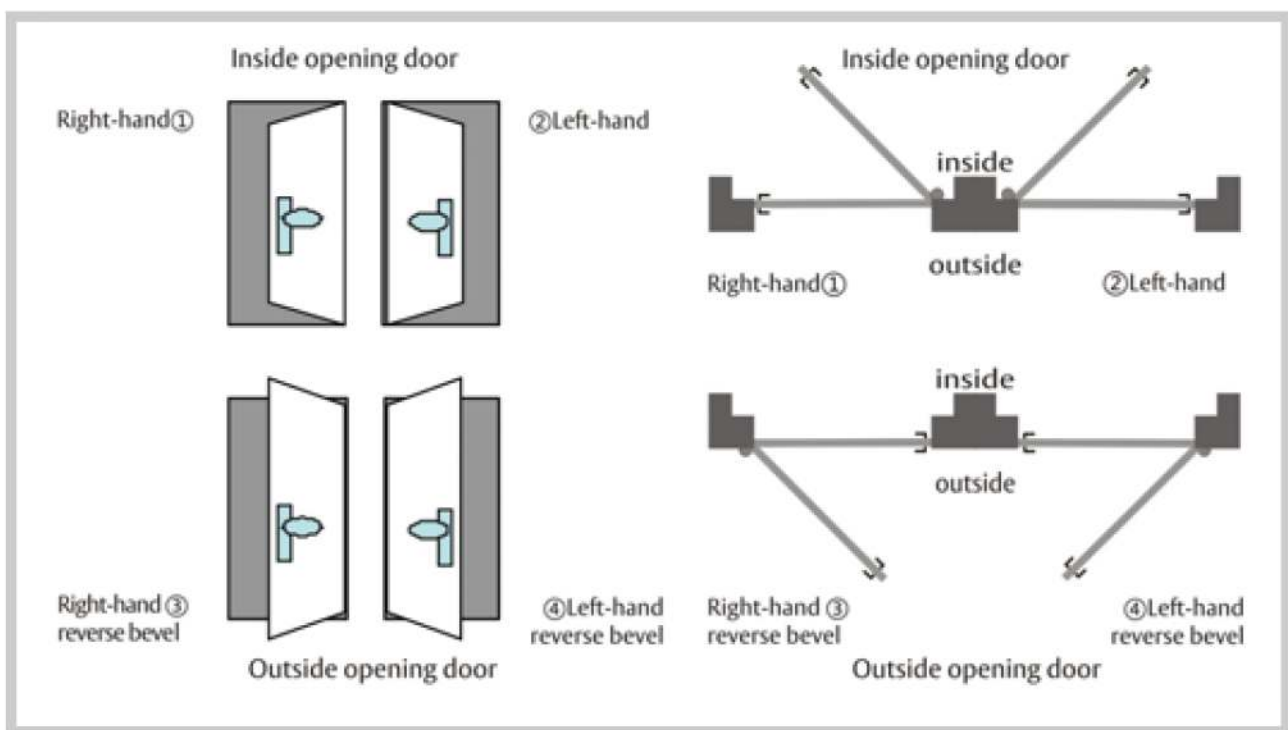
Dimension

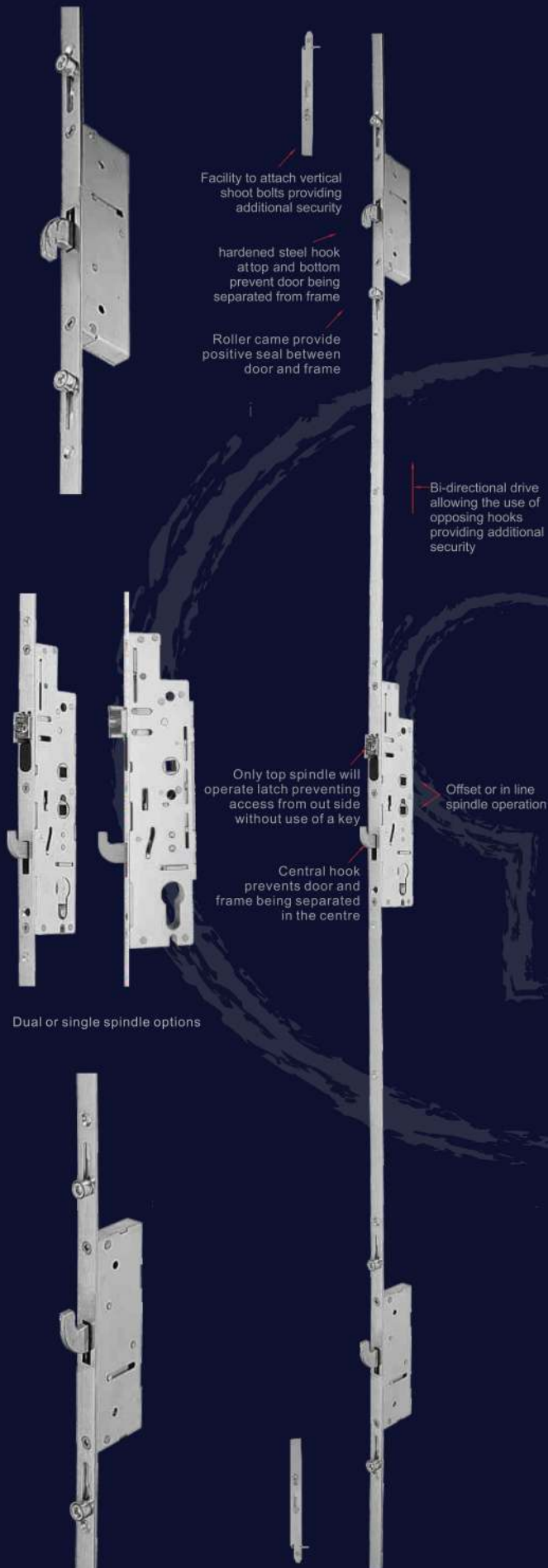
Dimension	Model No.
	<p>NAL26-E71 Passage Lock</p>
	<p>NAL26-E74 Entrance Lock</p>
	<p>Classroom Lock Store room Lock NAL26-E75</p> <p>Apartment Exit Lock NAL26-E79</p>
	<p>Classroom Deadlock NAL26-E76</p>

Dimension

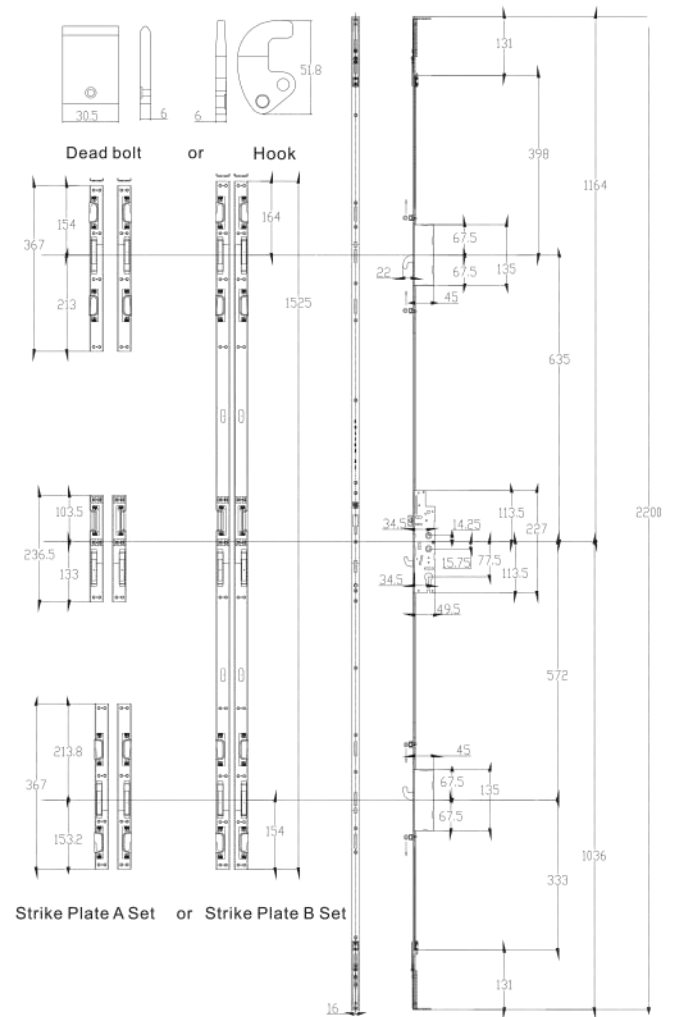
Dimension	Model No.
 <p>Technical drawing showing three views of the lockcase: front, side, and top. Dimensions are provided in millimeters.</p> <ul style="list-style-type: none"> Front View: Overall width 445, height 124, mounting hole spacing 85.7, and a 31.5 wide cutout. Side View: Overall height 203, mounting hole spacing 32, and a 32 wide cutout. Top View: Overall width 102, height 149, mounting hole spacing 70, and a 5.5 wide cutout. 	<p>NAL26-E7D Dormitory Exit Lock</p> <p>NAL26-E7K Privacy Bedroom/ Bathroom Lock</p>
 <p>Technical drawing showing three views of the lockcase: front, side, and top. Dimensions are provided in millimeters.</p> <ul style="list-style-type: none"> Front View: Overall width 44.5, height 124, mounting hole spacing 85.7, and a 31.5 wide cutout. Side View: Overall height 203, mounting hole spacing 32, and a 32 wide cutout. Top View: Overall width 102, height 149, mounting hole spacing 70, and a 5.5 wide cutout. 	<p>NAL26-E7H Dead Lock</p>
 <p>Technical drawing showing three views of the lockcase: front, side, and top. Dimensions are provided in millimeters.</p> <ul style="list-style-type: none"> Front View: Overall width 44.5, height 124, mounting hole spacing 85.7, and a 31.5 wide cutout. Side View: Overall height 203, mounting hole spacing 32, and a 32 wide cutout. Top View: Overall width 102, height 149, mounting hole spacing 70, and a 5.5 wide cutout. Additional dimensions for the bottom section are 62.35 and 92.35. 	<p>NAL26-E7L Passage Lock</p>

Door Handing





'10 POINTS' Patent Design



7 ACTIONS

- Three opposing hardened steel hooks
- Two or four roller cams
- Easily reversible latch
- Latch hold back snib on lock faceplate
- May be used Individually
- Extendable top and bottom as standard
- Free combination & custom dimension

Technical Data

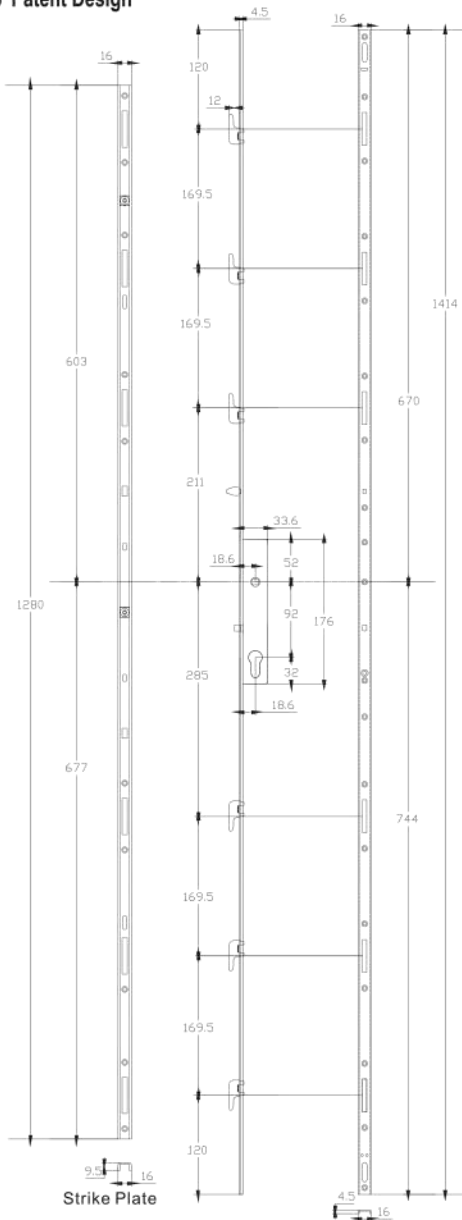
- Corrosion resistance BS EN1670 Graded for 240 hours
- Cyclic operation cycle tested to 200,000 cycles

Material

- Top and bottom hooks chrome plated A3 sintered steel
- Centre Hook Decromet coated A3 sintered steel
- Faceplate and gearbox are mild steel, zinc and clear passivity or 44mm white aluminium powdered coated
- Roller cams are mild steel, zinc and clear passivity

MLAB00001

'6 HOOKS' Patent Design



Dimension in mm

4 ACTIONS

- Six or eight opposing stainless steel hooks and centre anti lift bolt
- Mishandling device to prevent damage to lock and keep
- One piece stainless steel keeps
- Shootbolt extendable at top and bottom as standard

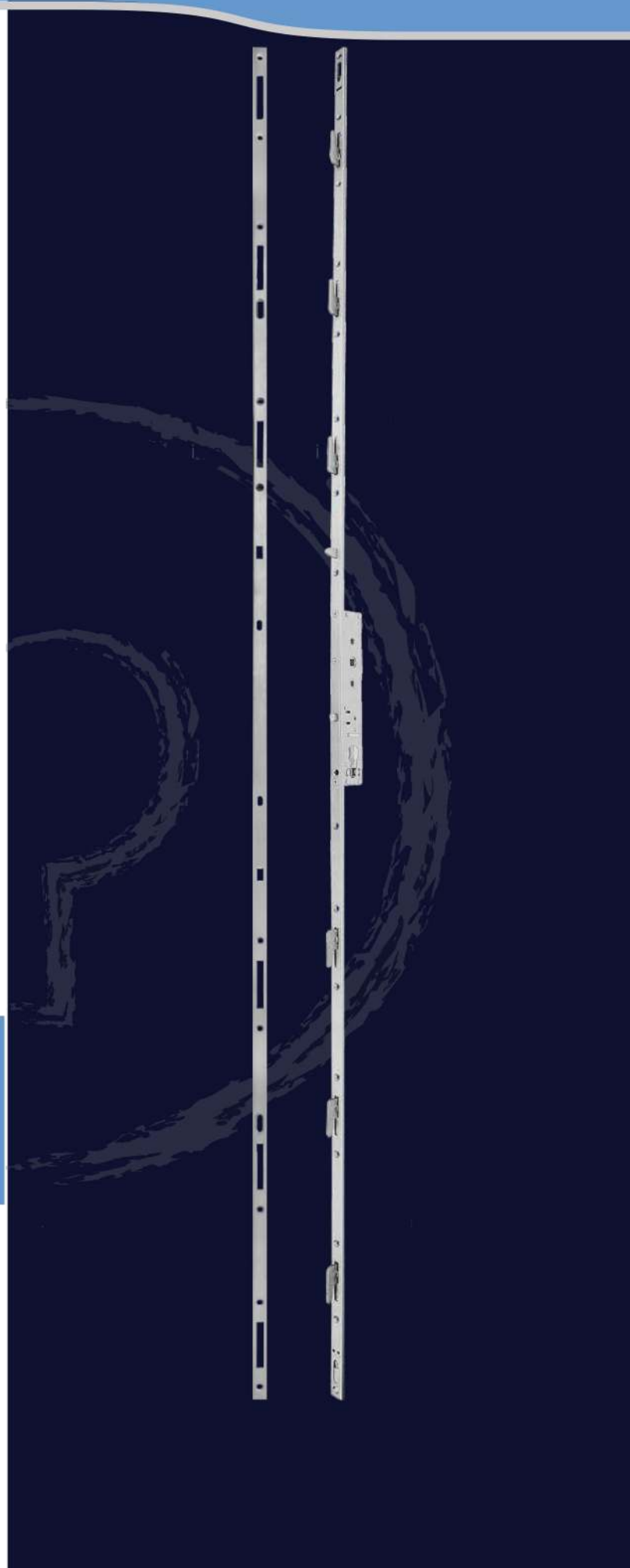
Technical Data

- Corrosion resistance BS EN1670 Graded Grade 5
- Cyclic operation cycle tested to 100,000 cycles

Material

- Top and bottom hooks 304 stainless steel
- Anti lift bolt 304 stainless steel
- Faceplate and gearbox 304 stainless steel faceplate, silver passivity centre gearbox
- One piece keeps 304 stainless steel

MLAB00002



Characteristics of Multi-Point Lock 900 & 1000

- Multi point narrow mortise locking system

- Only hook available also

That is free combination for latch/deadbolt/roller/hook/anti life bolt/ shoot bolt

- The newest design offers one dimension 35*92mm

Another design can offer backset in 35/45/55mm

- Existing finish in iron galvanize or SS304

Different prices for other finishes

- Lockcase design including latch, deadbolt, follower and hook all in stainless steel SS304

- In and out functions are not separated but in same follower

- This lockcase is suitable for either swing or sliding door

