

HINGSflor



ABS Building Products Pte Ltd . #06-09 Orion@PayaLebar . 160 Paya Lebar Road . Singapore 409022 . MacPherson MRT exit A . T: 65-6841 7600 Ext.200 . F: 6841 7300 . 9248 7647 / 8322 0647
ABS Hings Building Products Pte Ltd . #06-09 Orion@PayaLebar . 160 Paya Lebar Road . Singapore 409022 . MacPherson MRT exit A . T: 65-6841 7600 Ext.200 . F: 6841 7300 . 9424 3330
ABS Building Products Co Ltd . Unit 1001B . B 10/F . Join-In Hang Sing Centre . 71-75 Container Port Road . 2-16 Kwai Chung Crescent . Kwai Chung . (Kwai Fong MRT Exit C) . Hong Kong . T: 852-3904 3613 . F: 3579 3088
ABS Building Products Sdn Bhd . 29-G Jalan USJ Sentral 3 . USJ Sentral Persiaran Subang 1 . 47600 Subang Jaya . Selangor . Malaysia . 60 -12 389 0833
ABS Shanghai Representative Office . No. 619 . Building 5 . WANDA Plaza . 988 Hua Jiang Road . Shanghai . 201800 China . +86 -137 7445 4451
enquiry@absbldg.com www.absbuildingproducts.com www.absbldg.com

All rights reserved. No part of this publication may be reproduced, stored in a retrieval system or transmitted, in any form or by any means, electronic, mechanical, photocopying, recording or otherwise, without the prior permission of the copyright owner. Dimensional data is not binding. We also reserve rights to alter specifications and technical data without notice. 2017



HINGSWood

Living a sustainable life

HINGSWood

Re-engineering Timber

- Founded in 1987, ABS has been supplying building products in Singapore. ABS is one of the leading suppliers of Ironmongery, Signage and Flooring Product.

Re-engineering Timber

- Gaining in popularity are composite decking materials, composed primarily of a mix of recycled plastic and wood fibers. These materials are famous for their low-maintenance requirement: no sanding, refinishing staining ever.

Durability

- Composite decking is designed for maximum durability. It resists fading, staining, scratching and mold, and won't rot, crack or warp. It's also insect-proof and splinter-free, making it safer and more comfortable for families with kids and pets.

Low maintenance

- With composite decking, you never need to worry about sanding, staining or painting. Just an occasional soap-and-water cleaning is ensuring that it will all that's needed to maintain stability and beauty for decades. ABS decking even comes with a 5-year Warranty, continue to look and perform as well as it was installed.

Aesthetics

- Featuring high-definition wood grain patterns and rich, saturated colors, composite decking looks and feels more natural than ever before. In addition to the range of decking looks available, homeowners also can find a wide selection of composite accessories, such as railings, stairs, gates, pergolas and furniture to create a truly customized outdoor space.

Sustainability

- Composite decking provides the look and feel of wood without the environmental impact. The deck boards are made using recycled content, including reclaimed industrial wood scraps and recycled plastic from common items such as shopping bags and newspaper sleeves.

Why HINGSWood

- | | |
|----------------------|--------------------|
| ■ In-house installer | ■ Ex-stock |
| ■ Shop Drawing | ■ 5-year warranty* |

* T&C apply



Esteem Series (Ex-stock items)

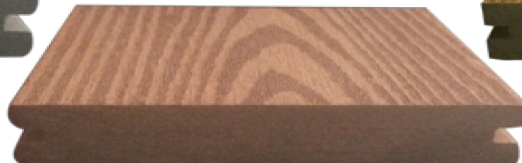
ET348
CoCo S02 & T01



ET349
Grey S02 & T01



ET353
Redwood S02 & T01



ET354
Teak S01 & T01



Hairline S01*



Regular S02



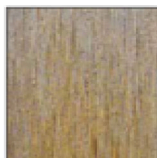
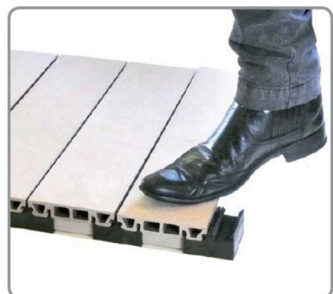
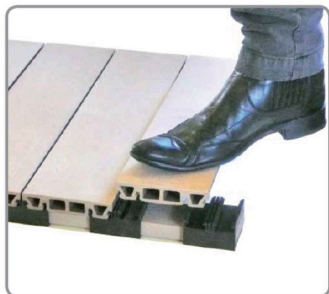
Tree Ring T01

Size : 138 x 24 x 2400 mm

* Hairline S01 finish available
indent only



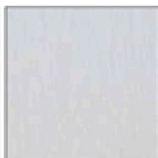
Smartclick



Teak



Coffee



White



Aged



Terra



Natural

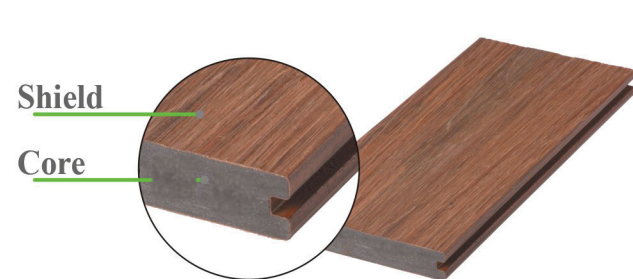
Technical Sheet

| 1 Storage in Boiling water (100°C) | | |
|--|--|-------------|
| Test item | Result (5h) | Requirement |
| Swelling in thickness | 1.10% | ≤ 4.5% |
| Swelling in width | 0.20% | ≤0.8% |
| Swelling in length | 0.10% | ≤ 0.5% |
| Water uptake | 2.20% | ≤ 8% |
| Test method: “Quality and Testing Specifications for Terrace Decking made from Wood-Polymer Composites (Version: 2013-01-01, “Quality Association for Wood-based Panels,registered association”Giessen,Germany)” Section 3.2 and EN 1087-1:1995 Test principles: After 5h storage in boiling water, the test pieces are immediately submerged in cold water (20±2°C) for 15 minutes. Later, be stored at room climate for 120 minutes. | | |
| 2、 Cold water immersion 28days | | |
| Test item | Result | Requirement |
| Swelling in thickness | 0.20% | ≤ 0.45% |
| Swelling in width | 0.40% | ≤1% |
| Swelling in length | 2.90% | ≤ 4.5% |
| Water uptake | 5.60% | ≤ 9% |
| Test method: “Quality and Testing Specifications for Terrace Decking made from Wood-Polymer Composites (Version: 2010-01-29, “Quality Association for Wood-based Panels,registered association”Giessen,Germany)” Section 3.9 and EN 317:1993 Test principles: The profiles are immersed in cold water (20±2 °C) during 28 days. | | |
| 3、 Performance under cyclic climatic stress | | |
| Test item | Result | Requirement |
| Performance under Cyclic climatic stress | Reduction of modulus of rupture 11.4% | ≤20% |
| Test method: “Quality and Testing Specifications for Terrace Decking made from Wood-Polymer Composites (Version: 2013-01-01, “Quality Association for Wood-based Panels,registered association”Giessen,Germany)” Section 3.5, 3.1,EN321:2001 and EN 310:1993 Test principles: The first cycle of climatic stress:28 days storage in cold water(20±1°C)→24h freezing (-25°C)→72h drying(72±2°C), Two further storage cycles:72h cold water storage(20±1°C)→24h freezing (-25°C)→72h drying(72±2°C). | | |

| 4、 Falling mass impact | | |
|---|---|--|
| Test item | Result | Test method: |
| Performance under falling ball test | No surface crack on the test pieces | None of the test pieces shall show with a length exceeding 10mm |
| | The maximum residual impact depth was 0.24mm | The maximum residual impact depth shall not exceed 0.5mm |
| Striking ball surface radius:25mm Strike mass:1000kg Drop height:700mm Support span:200mm “Quality and Testing Specifications for Terrace Decking made from Wood-Polymer Composites (Version: 2013-01-01, “Quality Association for Wood-based Panels,registered association”Giessen,Germany)” Section 3.6 and EN 477:1995 | | |
| 5、 Slip resistance | | |
| Test item | Result | Requirement |
| Slip Resistance | C | C |
| Test method: “Quality and Testing Specifications for Terrace Decking made from Wood-Polymer Composites (Version: 2013-01-01, “Quality Association for Wood-based Panels,registered association”Giessen,Germany)” Section 3.3 and DIN 51097:1992 | | |
| 6 、 Coefficient of linear thermal expansion 3.5×10 ⁻⁵ /K | | |
| Test item | Result | Requirement |
| Linear thermal expansion Coefficient (-20°C→+60°C) | 3.5×10-5/K | 5×10-5/K |
| Test method: “Quality and Testing Specifications for Terrace Decking made from Wood-Polymer Composites (Version: 2013-01-01, “Quality Association for Wood-based Panels,registered association”Giessen,Germany)” Section 3.7 and ISO 11357-2:1999 | | |
| Composition in Hingswood Products | | |
| Name | Percentage % | |
| Recycled Plastic HDPE (A Grade) | 30 | |
| Wood Fiber | 50~60 | |
| Process Aids | 5~6 | |
| Colorant | 2~2.5 | |
| Mineral Filler | 8~10 | |
| Remark: Process Aid Includes Lubricant, Anti-UV, Antioxidant and coupling agent. All the Material is Recycled | | |

Shield Series

- Additional of **impermeable layer of protection** from scratches, stains and fading.



- Option: Fireproof (New Feature)
Fire resistance decking and wall cladding available
Comply with EN Standard
Fire Resistance Level: Class Bfl
- Fire resistant is ON REQUEST & Color is CUSTOMIZED



| Maple | | | Antique | | | Magic Grey | | | Teak | | | Walnut | | | Ipe | | |
|---|--|---|---------|--|--|------------|--|--|------|--|--|--------|--|--|-----|--|--|
| Technical Sheet of Decking (VHI) | | | | | | | | | | | | | | | | | |
| 1. Abrasion Resistance (SGS TEST REPORT No.: GZIN160801093-01CCM) | | | | | | | | | | | | | | | | | |
| Test item | | Result | | | Requirement | | | | | | | | | | | | |
| Abrasion Resistance | | Wear index: 19mg / 1000 revolution | | | Specimen : 100 x 100 x 4.60mm 1 pc Type of abrasive wheel: CS-10 Load: 1000g / wheel (total 2000 g) Number of cycles: 1000 | | | | | | | | | | | | |
| Test method: | | | | | | | | | | | | | | | | | |
| With reference to ASTM D4060-14 and Client's requirement | | | | | | | | | | | | | | | | | |
| 2. Surface Soundness (SGS TEST REPORT No.: GZIN160801093-01CCM) | | | | | | | | | | | | | | | | | |
| Test item | | Result | | | Requirement | | | | | | | | | | | | |
| Surface Soundness | | >0.71 MPA | | | Specimen : 50.0 x 50.0 x 22.6 mm Bonding Area: 1000 mm² Testing Speed: 0.5 mm / min | | | | | | | | | | | | |
| Test method: | | | | | | | | | | | | | | | | | |
| With reference to EN311:2002 and Client's requirement | | | | | | | | | | | | | | | | | |
| 3. Rockwell Hardness (SGS TEST REPORT No.: GZIN160801093-01CCM) | | | | | | | | | | | | | | | | | |
| Test item | | Result | | | Requirement | | | | | | | | | | | | |
| Rockwell Hardness | | 83.3R | | | Specimen Thickness : 22.7 mm Lab Environmental Condition: 23±2°C, 50±5% RH | | | | | | | | | | | | |
| Test method: | | | | | | | | | | | | | | | | | |
| ASTM D785-08 (2015) Procedure A | | | | | | | | | | | | | | | | | |
| 4. Scratch Resistance (SGS TEST REPORT No.: GZIN160801093-01CCM) | | | | | | | | | | | | | | | | | |
| Test item | | Result | | | Test method: | | | | | | | | | | | | |
| Scratch Resistance | | Rating1 | | | EN438-2:2005 Section 25 | | | | | | | | | | | | |
| Rubbing Styles: Hemispherical diamond scratching point of radius (0.09 ± 0.003) mm and an included angle of (90 ± 1)° | | | | | | | | | | | | | | | | | |
| Rotational Frequency : (5±1) r/min | | | | | | | | | | | | | | | | | |
| 5. Anti-slip property (INTERTET REPORT No.: 170527113GZU-003) | | | | | | | | | | | | | | | | | |
| Test item | | Result | | | Requirement | | | | | | | | | | | | |
| Slip Resistance | | Mean overall acceptance angle : 14.6° Slip resistance class: R10 | | | DIN 51130-214 | | | | | | | | | | | | |
| Noted: Slip-resistance classification based upon the corrected mean overall acceptance angle | | | | | | | | | | | | | | | | | |
| Corrected mean overall acceptance angle | | | | | Slip resistance class | | | | | | | | | | | | |
| 6° to 10° | | | | | R9 | | | | | | | | | | | | |
| Over 10° up to 19° | | | | | R10 | | | | | | | | | | | | |
| Over 19° up to 27 ° | | | | | R11 | | | | | | | | | | | | |
| Over 27° up to 35° | | | | | R12 | | | | | | | | | | | | |
| Over 35° | | | | | R13 | | | | | | | | | | | | |
| 6. Falling mass impact resistance (INTERTET REPORT No.: 170527113GZU-003) | | | | | | | | | | | | | | | | | |
| Test item | | Result | | | Requirement | | | | | | | | | | | | |
| Falling mass impact resistance | | None of 10 test specimens showed a crack Maximum depth of residual indentation: 0.16mm | | | Distance between supports of 200 mm Radius of striker: 25 mm Mass of Striker: 1 kg Falling height: 700 mm | | | | | | | | | | | | |

Comfy Series

- **Soft, Comfortable & Safe Surface** of latest technology
Special in any way you can imagine them to be.



- **Comfortable Texture**



| Specification | | |
|---------------|--------|-----------|
| Profile | Width | Thickness |
| Solid | 143 mm | 23 mm |
| Round Hollow | 150 mm | 23 mm |



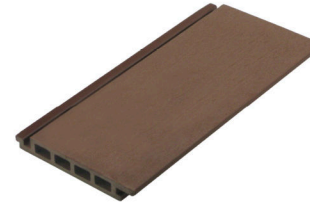
Teak Rosewood Verawood

Re-engineering Timber Cladding

- **Wall cladding, wall panel and fencing boards** are used for indoor and outdoor decoration that gives you a **simple and invisible installation**.



Wall Cladding



Wall Panel



Fencing Board



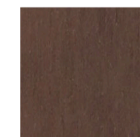
- **Waterproof**
- **100% recyclable**
- **No crack, no rot and no splinter**
- **Dampproof**
- **Insects resistance**



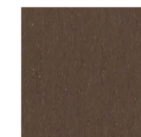
Teak



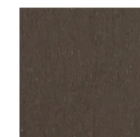
Rose Red



Rust Red



Brown



Dark Brown



Black

Re-engineering Timber Ceiling

- Used for interior ceiling in high space. Can adjust suspended hanger to get any suitable height. **Indoor WPC ceiling** is developed with rich colors and natural textures to embody wood finish, can widely used in **both commercial and residential space**.



Indented Groove



H-Groove



Shallow Groove



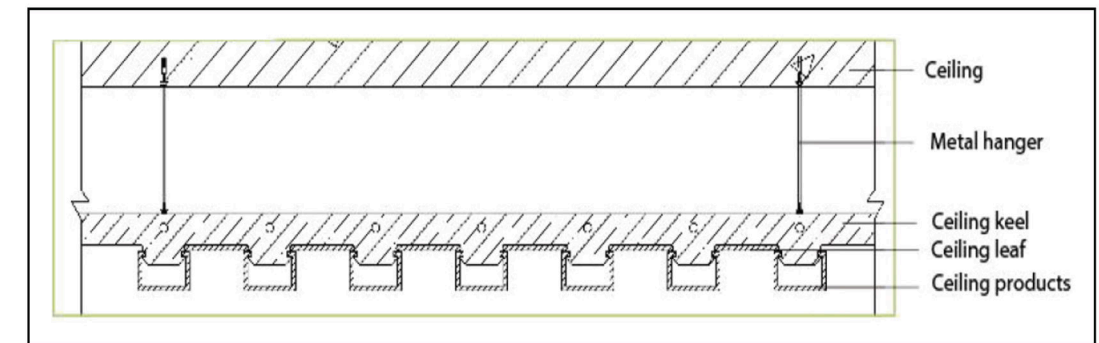
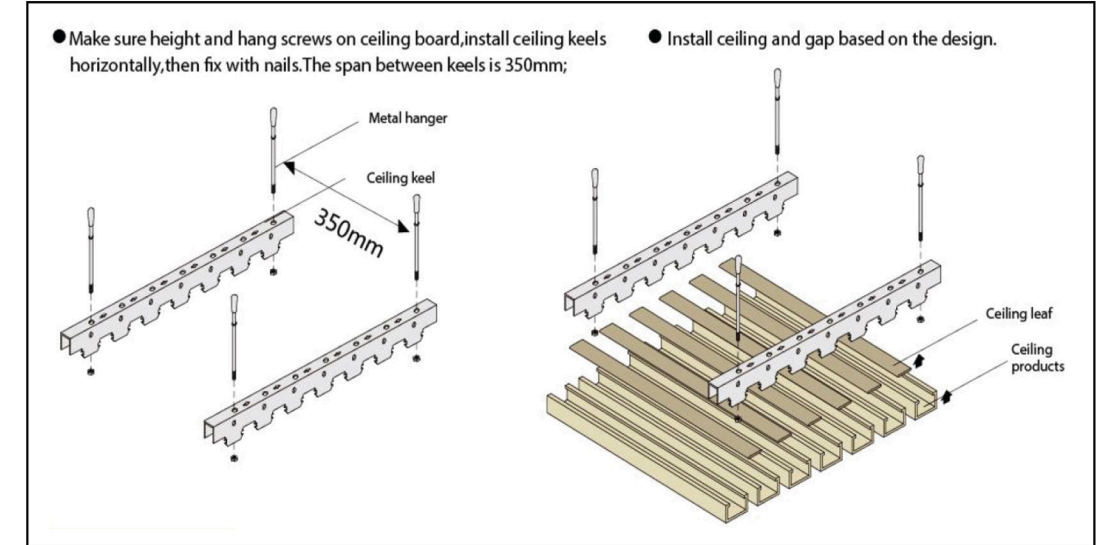
Deep Groove



A-Groove



Standard Groove



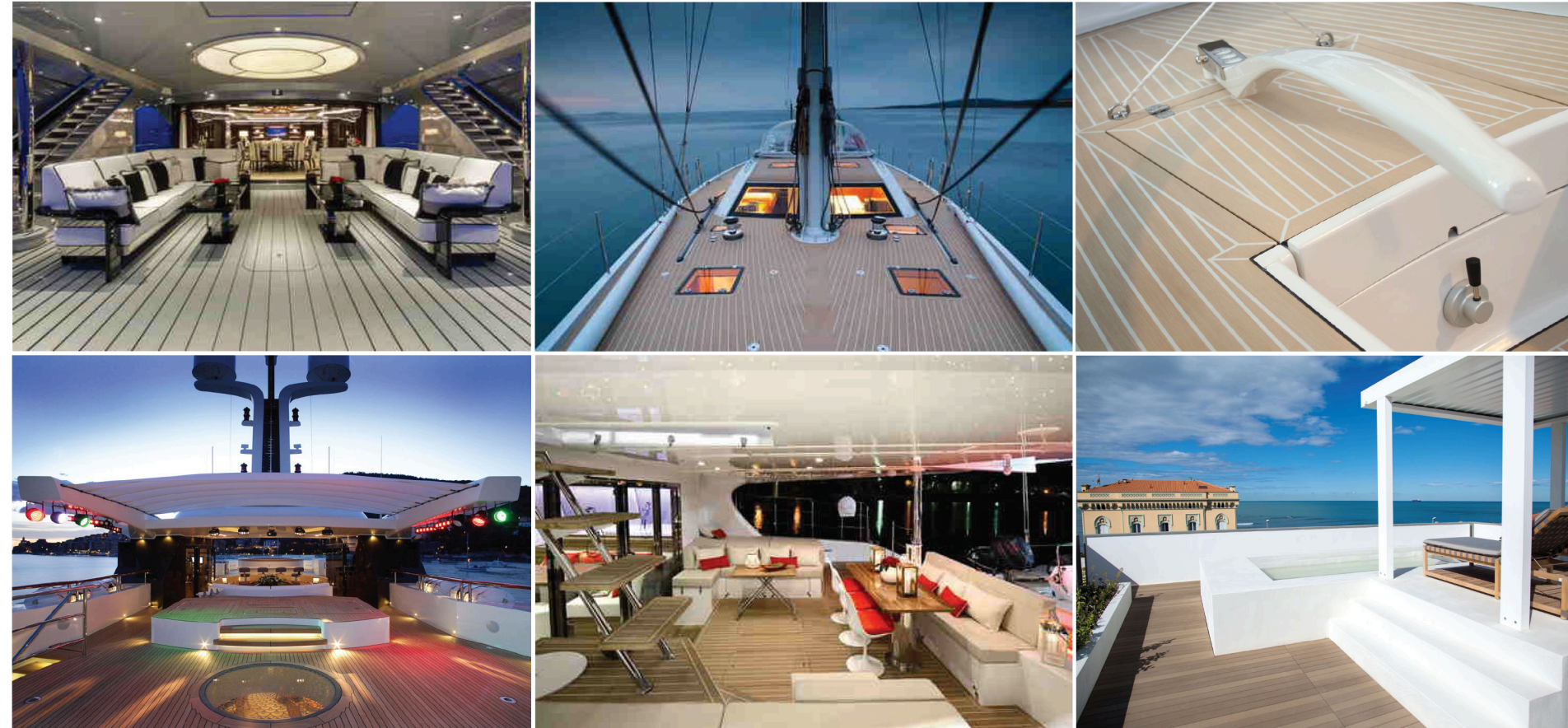
- **Rot proof**
- **Natural color**
- **Easy to install**
- **Water resistant**
- **No toxic release**
- **Low maintenance**
- **Inflaming retarding**
- **No painting & paintable**



Esthec

Recycle Ecology Wood From Europe

- Esthec was founded 50 years ago. Today, Esthec is used on hundreds of **cruise ships**, and used in many **outdoor residential** and **commercial applications**. Esthec material not only looks good but also has tremendous -ly improved functional characteristics as well. Esthec is exclusively distributed by ABS in Asia.
- The material can withstand severe weather conditions and is **non -slippery**. In addition, it **does not absorb water**, resulting in **minimal growth of mosses and algae**. The material is also **fire retarding** and **highly cost-effective**.



Esthec

Recycle Ecology Wood From Europe

Colour for Decking



Composition

- Liquid material consist of 25 ingredients including **natural resins, natural fibres, minerals** and **colour pigments** which are **recyclable**

Advantages

- **Recyclable**
- **Slip Resistant** (R13 rated)
- **40-year** track record
- **Lightweight Click System** (for efficient and quick installation)
- **Low maintenance, minimal bacterial growth , repellant to any liquid**
- **Creative Freedom**, 9 fashionable colours and on-demand colours
- **No fumigation** procedures : zero impact on import
- **Low heat co-efficiency** : virtually no impact to materials in extreme temperatures
- **Durable**
- **Wear and Impact Resistant**
- **No hazardous materials (no PVC)**

Applications

- Outdoor applications like decking at hotels and resorts, roof top gardens, high end residential balconies , pool decks etc

Color for Profile





HINGSWoodFRC

Fibre Cement Decorative Decking

Fibre Cement Decorative Decking

- **HINGSWOOD FRC** is Fibre Cement Decorative Decking carried by ABS. It is eco-friendly wood replacement product, combines strength of concrete and beauty of wood.
- **HINGSWOOD FRC** is suitable for indoor flooring, outdoor and poolside decking etc.

Composition

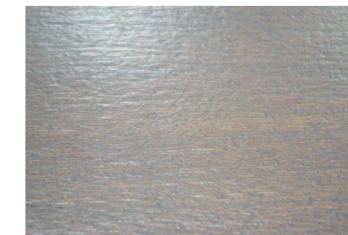
- Portland Cement, Cellulose Fibre from Recycled Paper, Calcium Carbonate and Additives

Installation Method

- Adhesive cement (Lay-on)
- Framing support (with Batten/ Substructure)

Advantages

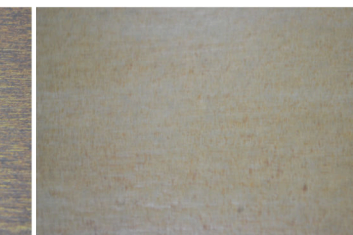
- Termite Free
- Rot Free
- Fungus and Algae Free
- Low Maintenance
- Weather Resistant
- Non Combustible
- Asbestos Free
- No batten required



Wenge



Cherry



Beige





HINGSWoodFRC

Fibre Cement Cladding & Ceiling

Fibre Cement Board

- This is a new generation of fiber cement material for cladding and ceiling with technology made the board gain **strength, durability** and **elasticity** in one time.
- Composition
 - state-of-the-art composition of **Elephant Portland Cement,**
 - **Silica**
 - Special **cellulose fiber** through **Autoclave process**
- Application
 - Designed for **cladding** and **ceiling** applications both **internal** and **external** usage.

Technical Sheet

| Attributes | Test value | Standard |
|--|-----------------------|-----------------------|
| Water expansion rate (24 hrs. soak) | 0.12% | JIS A 5420 |
| Density | 1,260 Kg./M3 | ASTM C 1185 |
| Resistant to leakage (24 hrs. water contain) | Pass | TIS 1427-2540 |
| Water absorption rate | 34% | - |
| Tension force perpendicular to the surface | 1.0 MPa | JIS A 5905 |
| Modulus of Rapture (Wet Test) | 10 N/Sq.mm. | ASTM C 1185 |
| Heat Conductivity rate (K) | 0.084 W / M c | ASTM C 117 |
| ¹ Sound Resistant (STC) | 38 dB | BS 2750 |
| Non Flammable , Non combustible | Pass | BS 476 Part 5,6 and 7 |
| ² System flame resistant | 1 and 2 hrs. | BS 476 Part 20-22 |
| Drying Shrinkage rate (60 c, 24 hrs.) | 0.04% | - |
| Modulus of Elasticity | 4,500 N/Sq.mm. | ASTM C 1185 |
| Bending Radius (4, 6, 8, 10 mm.) | 1.0, 1.5, 2.0, 4.0 M. | - |
| Remarks : 1. When installing 8 mm. It is with light-weight-wall galvanized studs with no sound installation 2. When installed with Rockwool fire-insulation | | |

- Advantages
 - **High impact strength**
 - **Water-resistance** and **non-decay**
 - **Termite resistance**
 - **Flexibility** for various designs
 - **Light weight**, fast and easy to install
 - **Better heat resistance**



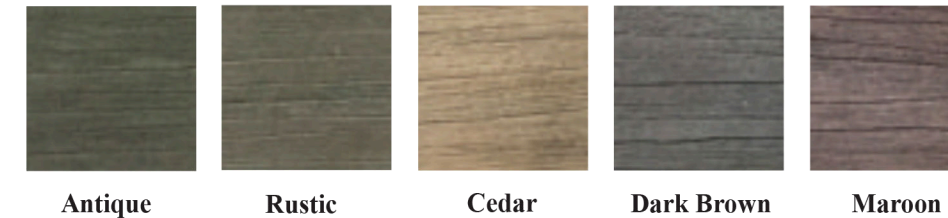
HINGSWoodGFRC

Glass Fibre Cement

GFRC Glass Fibre Reinforced Cement

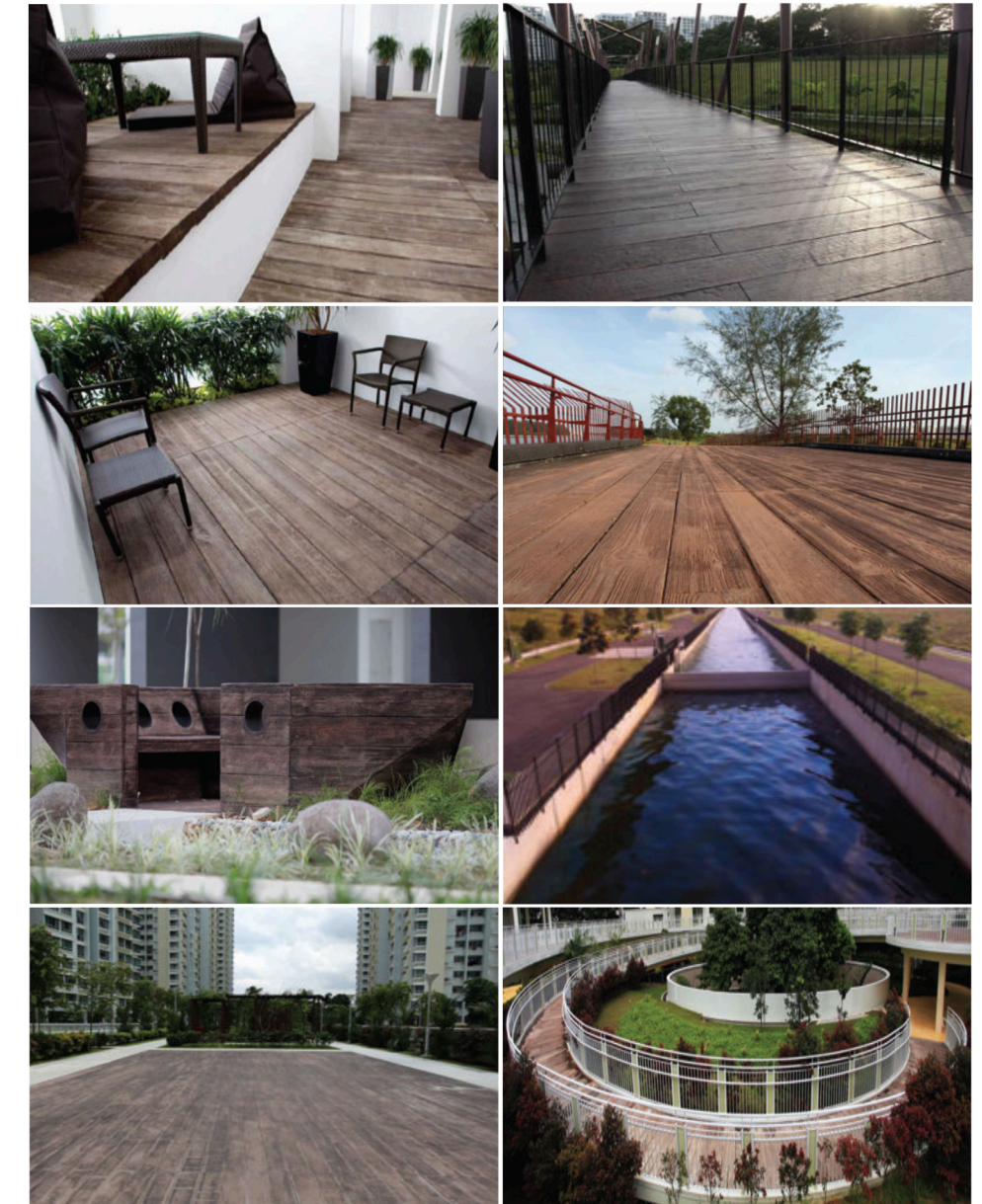
- GFRC simulated timber is a product that derives the exact **same textures** from real wood but have **none of its inherent flaws**. The use of the product could save an abundance of trees from being deforested to satisfy the aesthetical requirements society demands.
- Composition
 - Fine Aggregates
 - Cement
 - Alkaline Resistant Fibre
 - Water
 - Reinforced Steel Bar
- Advantages
 - **For decking, cladding & ceiling**
 - **Fire proof**
 - Environmental friendly
 - **Termite Free**
 - **Zero warping**
 - **Flexibility in color**
 - **Low maintenance** requirement & **durability**

Color



Technical Sheet

| | | |
|--|---------------------|------|
| Tests | Precast | GFRC |
| Compressive Strength (N/mm2) | 36 | 38.5 |
| Density (Kg/m3) | 1990 | 1970 |
| Modulus of Rapture (Mpa) | 12.41 | - |
| Class O Certification | Positive | - |
| General Skid Resistance Classification | ----- LOW RISK----- | |
| *Tested and certified by SetSCO & TUV SUD. All existing reports are available upon request | | |



Adjustable Pedestal System

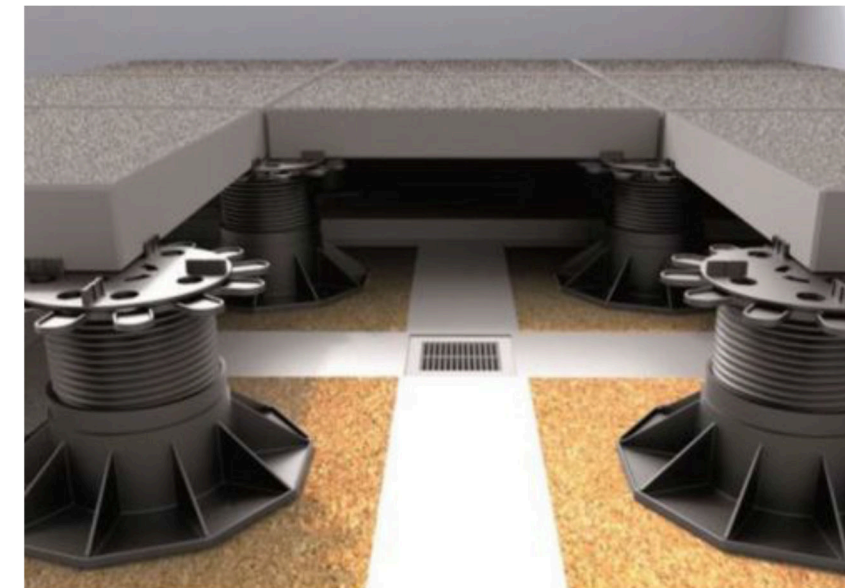
- Founded in May 1999, Eurotec GmbH has been transformed into a very successful company renowned internationally. Exclusively distributed by ABS in Asia, Eurotec Adjustable Pedestal System has high load-bearing capacity which is widely used in commercial and residential projects.

Characteristics

- For **timber, composite and stone** decks
- **Three different basic heights** 5.3cm, 8.2cm and 11.7 cm
- **Two extension rings** 4,0 cm and 10,0 cm
- **Three head-plate adapters:**
- **Click-Adapter-** 40/60 for the time saving click-on assembly of our aluminium profiles
- **L-Adapter-** for classical timber joists, composite joists or any modern aluminium profiles
- **Stone-Adapter-**for the use with stone slabs
- For **timber or composite** decks, there are **four types of pedestals** :
- **ECO S**-2,5-4,0 cm **ECO L**-6,5-13,0 cm
- **ECO M**-3,5-6,55 cm **ECO XL**-13,0-19,8 cm

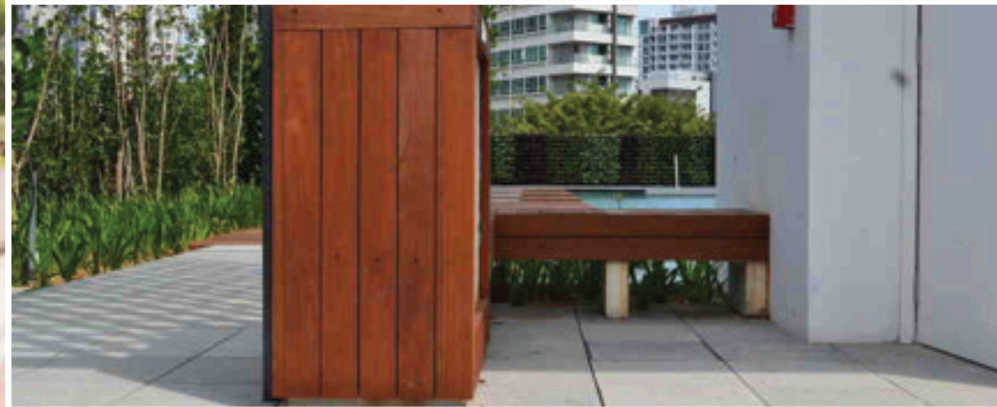
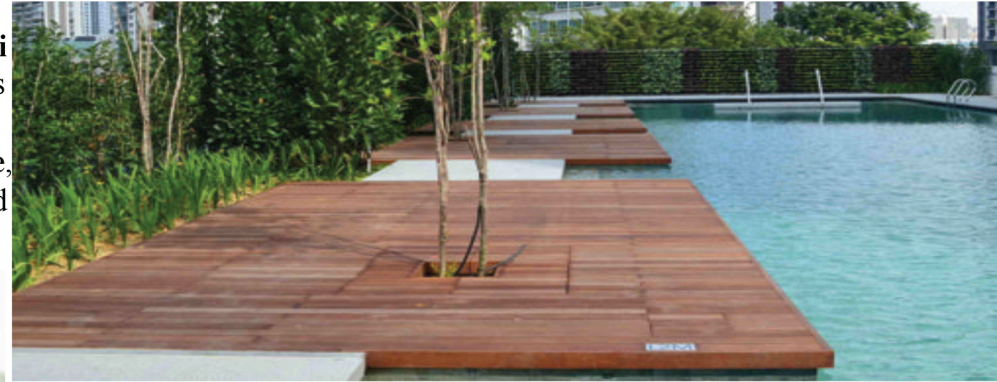
Advantages

- High Load-Bearing Capacity of up to **8KN/foot**
- Allowance for up to **4 meter height cavity**
- Quick and Easy Assembly
- **Stepless Height Adjustment**
- Resistant to weather, UV Exposure, insects and rot
- Easy to install and little or no maintenance
- Device accomdation **slope up to 10 degree**
- **German factory's technical advice**; number of pedestals optimized



Natural Outdoor Timber

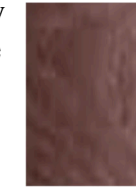
- ABS also supplies natural outdoor timber, mainly **Balau** and **Chennai** with a great variety of different sizes, to meet the design requirements of your swimming pools, gardens and other landscape areas.
- In addition to the decking, ABS also builds **trellis**, **planter box**, **fence**, **pagoda**, **roof top**, **external wall** and so on with both the natural and composite timber.



- The **Soft line system, invisible fixation** for decking patented in Europe and is manufactured near the Luxembourg border by the Vetedy Group. 5 Species of wood, all class 1 durable (class 4 for France): **Padauk**, **Merbau**, **Ipe**, **Teak** and **Jaya**.
- The group innovates in 2011 with its patented system Technidic especially designed for **claddings**, **walls** and **ceilings covering** in wood without visible screws, with an **incredible speed of installation** for a **precise finish** recognized in numerous countries.



Iroko



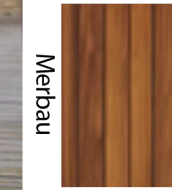
European Ash



Padauk



Poplar



Merbau



Northern Pine

Technidic



Ipe



Yellow Pine



Teak



Padauk

Soft Line



Vinyl

- **Zero Formaldehyde** - Zero Formadehyde Vinyl has been specifically developed for environmentally sensitive interior applications. It is an ideal material used in the flooring industry, providing you a healthy environment.

■ **Safe Indoor air quality** - Good indoor air quality improves the personal well-being and health of users. We offers you a peace of mind, knowing you are providing a safe and healthy environment for the users.

■ **99% anti - bacterial**

■ **Complies to B1 fire rating requirements**

■ **Real wood feel (EIR)**

■ **Up to 7mm thickness**
- Technical Sheet

| Test Property | Test Method | Test principles/require ments | | | Rating/ Result | Test Property | Test Method | Test principles/require ments | | | Rating/ Result | | | | | | | | | | | | |
|-------------------------------------|---|--|--------------|--|--|---|--------------------------------------|--|----------------------|-------------|---|-----------|----|--------------|-------|-----------|----|--------------|--------------------------|--|----------------------------|--|-----|
| Reaction to fire | EN 14041:2004 (clause 4.1) | The specimen shall be tested on one of the two standard substrates specified for floorings in EN 13238:2001 according to the intended end use. The co mposition of the product, including the presence of any fire retardant additive, shall be declared by the m anufacturer prior to type testing. | | | Efl Refer to Result 1 for further details | Slip resistance | EN 14041:2004 (clause 4.5) | If a claim for slip resistance is made, the floor covering intended to be used in dry and non-conta minated conditions shall have a dynamic coefficient of friction of ≥ 0,30 when tested ex-factory under dry conditions in accordance with EN 13893 and shall be declared as technical class DS. Although such floors may be subjected to occasional spillage and wet cleaning, the manufacturer does not guarantee the performance under these conditions. If no claim for slip resistance is made, the floor coverings for which no performance has been determined shall be declared as technical class NP D. | | | Pass Class DS See Result 4 | | | | | | | | | | | | |
| Content of pentachlorophe nol(PC P) | EN 14041:2004 (clause 4.2) | Resilient, textile and la minate floor shall not contain P C P.In case of where verification is required, if the content is less than 5pp m in the parts of the product, this require ment shall be considered to be met. For laminate floor the method CE N/T R 14823,for textile floor the method CE N/TS 14494 shall be used. For resilient floor verification is not required. | | | Pass See Result 2 | | | | | | | | | | | | | | | | | | |
| Formaldehyde emission | EN 14041:2004 (clause 4.3) | When formaldehyde-containing materials have been added to the product as a part of the production process, the product shall be tested and classified into one of two classes: E1 or E2. <table border="1"><tr><td></td><td>Test method</td><td colspan="2">For maldehyde class and Require ment</td></tr><tr><td rowspan="3">Initial type testing</td><td rowspan="3">E N V 717-1</td><td>Class</td><td>R eleases</td></tr><tr><td>E1</td><td>0.124 mg/ m3</td></tr><tr><td>Class</td><td>R elease></td></tr><tr><td>E2</td><td>0.124 mg/ m3</td></tr></table> | | | | Test method | For maldehyde class and Require ment | | Initial type testing | E N V 717-1 | Class | R eleases | E1 | 0.124 mg/ m3 | Class | R elease> | E2 | 0.124 mg/ m3 | Class E1 See Result 3 | Electrical behavior (static electricity) | EN 14041:2004 (clause 4.6) | The body voltage, measured in accordance with EN 1815 for resilient and la minate floor coverings or IS O 6356 for textile floor coverings, shall not exceed 2,0 kV Static dissipative floor coverings: The vertical resistance, measured in accordance with E N 1081 for resilient and laminate floor coverings or IS O 10965 for textile floor coverings, shall not exceed 109Ω C onductive floor coverings: The vertical resistance, measured in accordance with E N 1081 for resilient and laminate floor coverings or IS O 10965 for textile floor coverings, shall not exceed 106Ω | N A |
| | Test method | For maldehyde class and Require ment | | | | | | | | | | | | | | | | | | | | | |
| Initial type testing | E N V 717-1 | Class | R eleases | | | | | | | | | | | | | | | | | | | | |
| | | E1 | 0.124 mg/ m3 | | | | | | | | | | | | | | | | | | | | |
| | | Class | R elease> | | | | | | | | | | | | | | | | | | | | |
| E2 | 0.124 mg/ m3 | | | | | | | | | | | | | | | | | | | | | | |
| Water-tightness | EN 14041:2004 (clause 4.4 refer to EN 13553:2002) | Cover the supporting base with the indicator paper. Place the test specimen on the paper with the use surface side upwards. Place the box over the test specimen and press the support towards the box to ensure water tightness. Fill the box with water to a level of 200 m m above the upper surface of the test specimen. This water level is m aintained for 24h after which the water is drained off. The moisture indicator and the test specimen are exa mined for any signs of water penetrating the specimen. The test specimen is considered watertight if there is no sign of penetrating water. | | | Pass No sign of penetrating water. | Thermal conductivity | EN 14041:2004 (clause 4.7) | When floor coverings are to be installed over an under-floor heating syste m the design thermal conductivity values given in EN 12524 shall be assu med for design calculation purposes. Alternatively, the thermal resistance measured in accordance with EN 12667 may be used. | | | 0.0950 W/(m· K) Refer to Result 5 for further details | | | | | | | | | | | | |
| | | | | | | Note: NA= Not applicable N C = Not conducted | | | | | | | | | | | | | | | | | |
| | | | | | | | | | | | | | | | | | | | | | | | |

Wood Series



Wenge



Teak



Oak



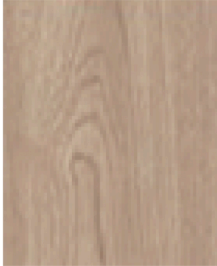
Beech



Cotton Tree



Cherry



Gum-kino



Sal

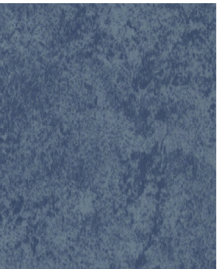


Aloewood



Pine

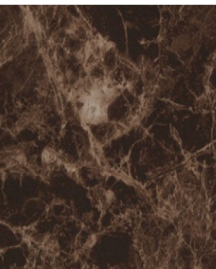
Stone Series



Sapphire Marble



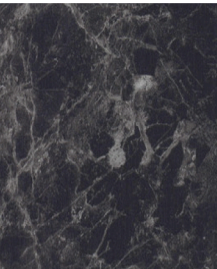
White Marble



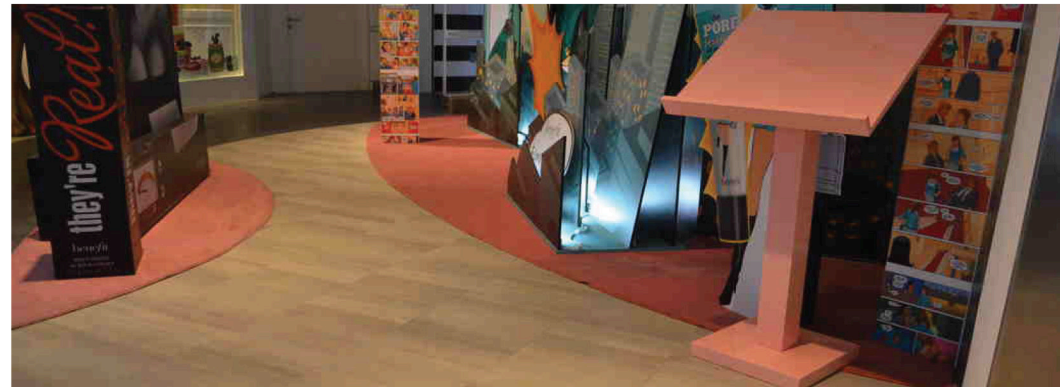
Luxurious Topaz



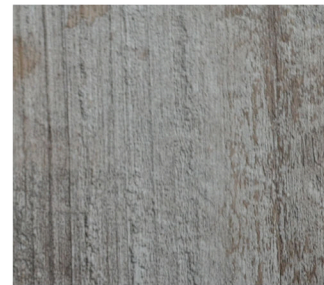
Creamy Milk



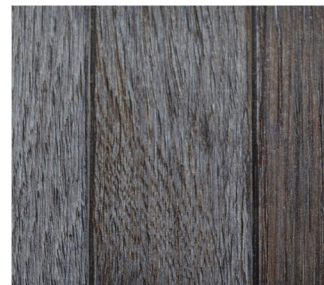
Dark Stone



Special Series



Sea



Rainbow



Paint

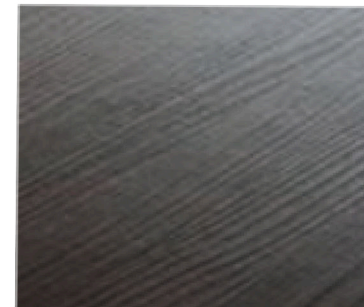
Specification

| Types | Size (mm) | Size (inches) | Thickness (mm) | Wearlayer (mm) | Material |
|----------------------------|--|------------------------|----------------|----------------|---|
| Vinyl planks with dry back | 152.4*914.4mm ; 177.8*1219.2mm; 228.6*1828.8mm | 6"*36", 7"*48", 9"*72" | 2-3 mm | 0.15 -0.5 mm | Original virgin PVC / UV coating |
| Valinge Click Vinyl Tile | 152.4*914.4mm ; 177.8*1219.2mm; 228.6*1828.8mm | 6"*36" 7"*48" 9"*72" | 4-7mm | 0.15 -0.7mm | Original PVC with fiberglass / UV coating |
| Special Series | 203.2*1219.2mm | 6"*36", 8"*48" | 3mm | 0.3mm | Original Virgin PVC with CaCO3 / UV coating |

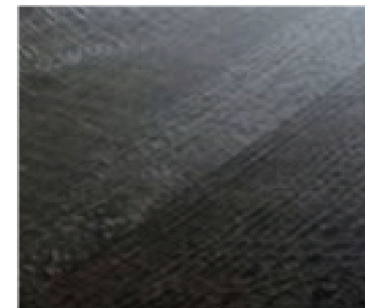
Finish



Crystal



Embossed



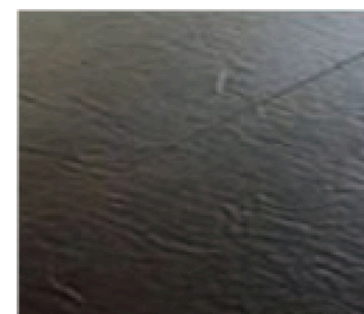
Handscraped



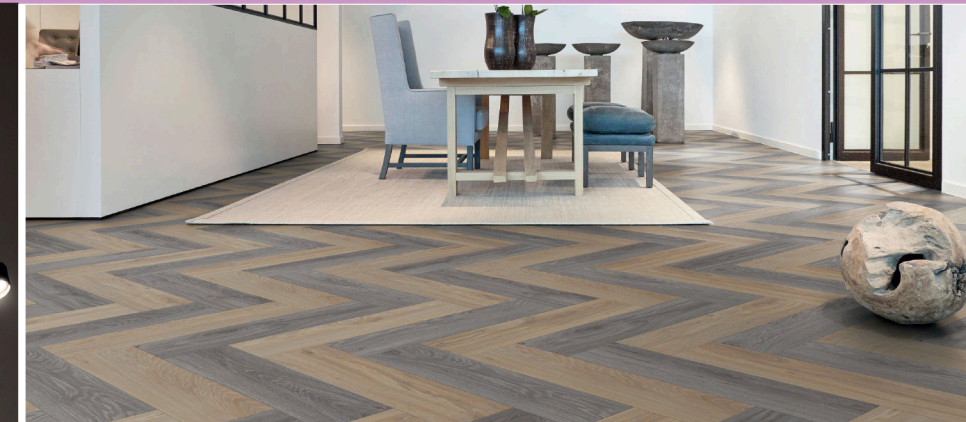
Saw Cut



Eir



Stone



Nano-modified Waterproofing Membrane

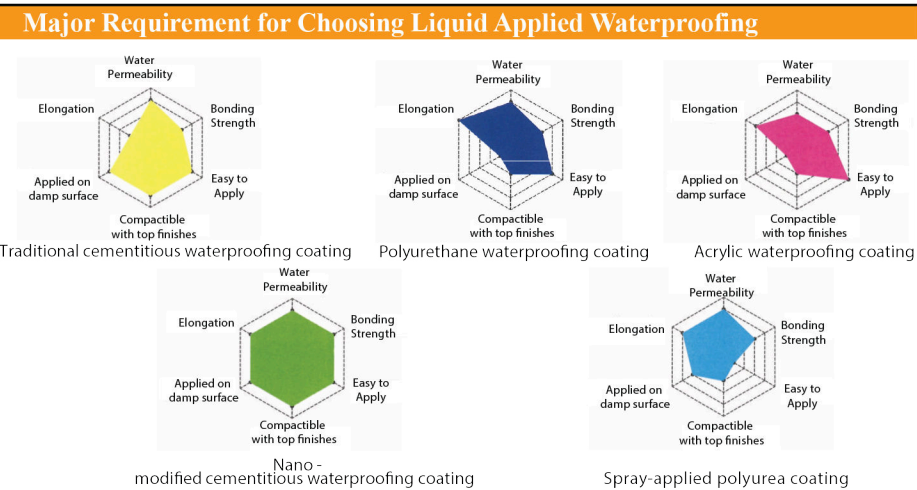
- Traditional cementitious waterproofing has low flexibility and poor bonding strength on concrete substrate.
- HINGSFLOR, with the help and technology support of Nanotechnology, a novel cementitious water proofing coating is developed to have **high flexibility** and **excellent adhesion** on the substrate. The technology is awarded the 45th **International Exhibition of Inventions of Geneva-Silver Medal**
- Nanoparticles having at least one dimension in the nanometer range can enhance the **tensile strength, ductility, adhesion** and other performance when they are efficiently incorporated into coating system with **uniform dispersion**.
- A methodology has been developed to disperse the nanoparticles in the coating in order to **modify the polymer cementitious coating**, achieving **higher elasticity** and **superior waterproof performance**.

■ Advantages

- **Pre-packed**, easy to mix and apply
- **High flexibility**
- **Excellent adhesion** on dry and **damp sound substrate**
- Excellent waterproofing quality:able to **withstand high hydrostatic pressure**
- Formation of a more solid and durable coating with **good mechanical performance**
- Suitable for coating interior and exterior **against water ingress and dampness**
- **Low VOC**, non-toxic, suitable for us in waterproofing portable water tanks
- **Environmental friendly**

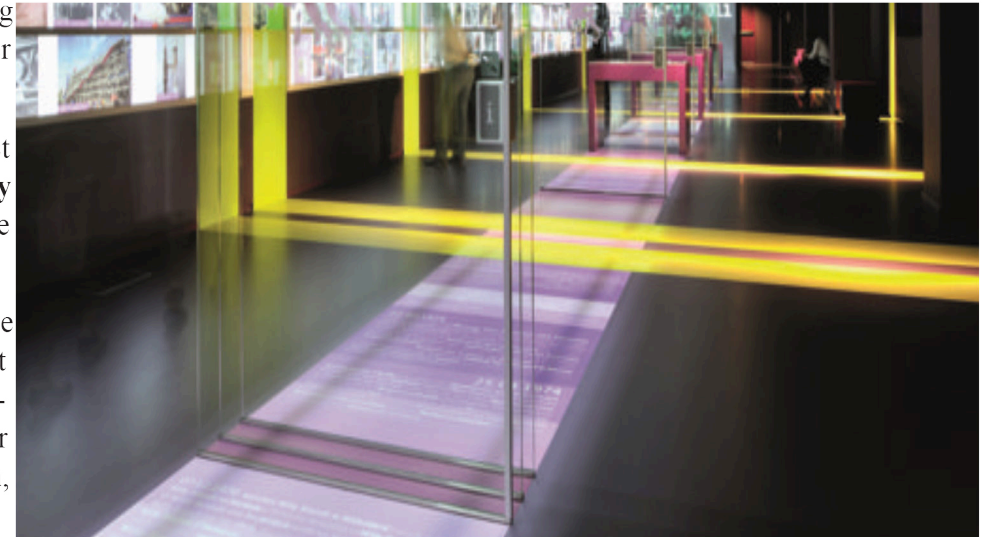
■ Application

The superior performance, easy application and cost-effective features further enable the developed coating to be easily applied to various construction waterproofing fields including basements,toilets,kitchens terraces, swimming pools, water tanks, decks and flat roofs.



The Premium Liquid Flooring

- Bolidt uses the NCS colour system for its flooring systems. All of her flooring systems can be produced in any colour from the Natural colour System by her laboratory.
- NCS takes colouring to the next level in any design or architecture project. Each colour can be described by its degree of **similarity to the elementary colours yellow, red, blue, green, white** and **black**, which in their purest state cannot be compared to any other colour.
- The Natural Colour System was developed through 15 years of extensive research with the usage range from colour management in product development and ensuring accurate paint production to colour design in architectural and interiors. Nowadays, Bolidt Flooring System are widely used for the **general & food industry, public buildings, infrastructure application, sports ground** as well as **deck finishing for ship building** etc.



Eco Block System

- **Eco Block System** is a breakthrough in the technology of sound insulation that is **crucial to hotel ballroom, theatre and concert hall**. Unlike other building materials, it is **green building material** that has earned **prestigious awards including Green Label**.
- The **main raw material** is **flue gas desulphurization (FGD)**, a by-product of power plants. Sulphur dioxide (SO₂) can be removed. As a result, **air pollution and acid rain can be reduced** drastically.
- It also **contains fiberglass** which is tailor-made with **wrapping plastic membrane all around the fiberglass**. Since **plastic membrane** is both **water and damp proof**, it can be used in a new wall if needed.
- It demonstrates the advantages of **saving building materials of metal mesh, stiffener, plastering and lintel** which will contribute to a **friendly environment with less use of material, waste and energy**.

Advantages

- **Comfortable and clean**
- **No hazardous: Low level of radiation**
- **No odour:** Due to **low** thermal conductivity and **high** water vapour permeability
- **No attract dust: Low surface conductivity prevents static electricity.**
- **PH value and vapour diffusion:** Similar to those of human skin. The dry wall surfaces hinder the growth of mould fungus.
- **Alive:** Due to the **high marco porosity**, it first absorb and then release moisture when conditions change. It brings wall to life and create a comfortable environment.
- **Solid and sturdy:** **No more lintels**, special connection angles, sub-frames or profiles to fasten wall loads. Eco Blocks sturdy and **can bear heavy loads** such as kitchen units and washbasins. No surface plaster is required so the free area is more providing more space.

- **Outstanding Performance:** **Fireproof, sound proof, noise proof, Light**, yet can bear heavy loads, environmentally friendly, versatile and economical.
- **Simple installation:** **Adaptable with tongue and groove joints**. It **dries quickly** so the wall can be decorated shortly after it is built.

