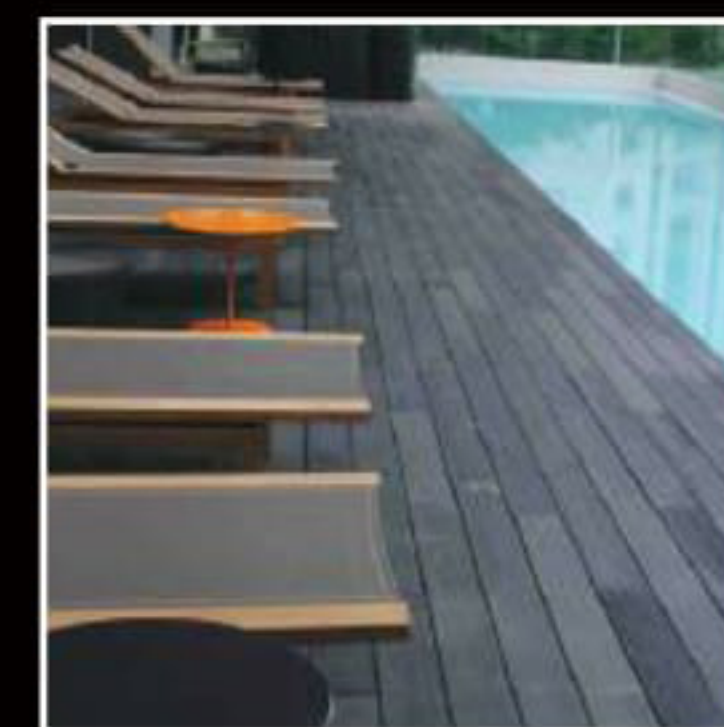
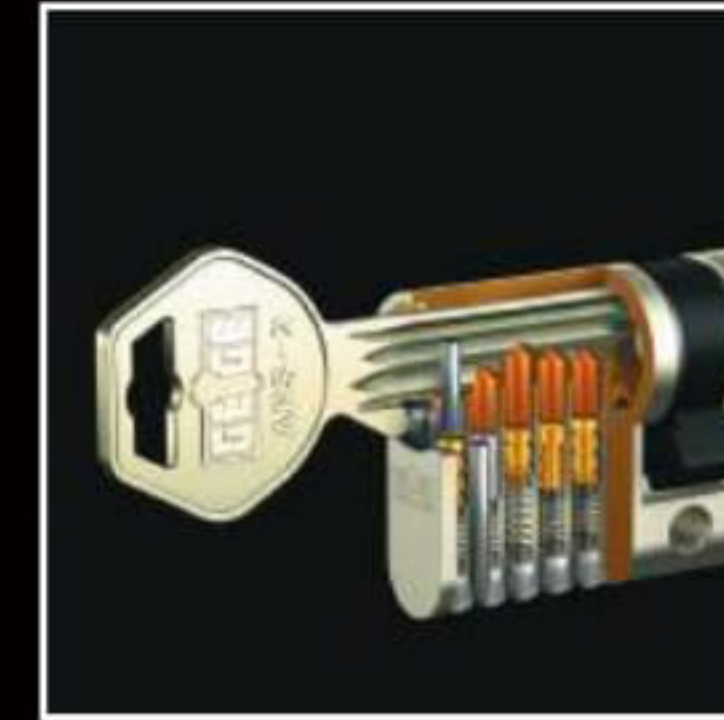




ABS BUILDING PRODUCTS

Your Ironmongery, Signage & Flooring Partner...



ABS Building Products Pte Ltd . #06-09 Orion@PayaLebar . 160 Paya Lebar Road . Singapore 409022 . MacPherson MRT exit A . T: 65-6841 7600 Ext.200 . F: 6841 7300 . 9248 7647 / 8322 0647
ABS Hings Building Products Pte Ltd . #06-09 Orion@PayaLebar . 160 Paya Lebar Road . Singapore 409022 . MacPherson MRT exit A . T: 65-6841 7600 Ext.200 . F: 6841 7300 . 9424 3330
ABS Building Products Co Ltd . Unit 16 . 5/F Metro Centre II . 21 Lam Hing Street . Kowloon Bay . Kln . Hong Kong . T: 852-3904 3567 . F: 3904 3532 . 5646 8340 . QQ: 2272 928033
ABS Building Products Sdn Bhd . 29-G Jalan USJ Sentral 3 . USJ Sentral Persiaran Subang 1 . 47600 Subang Jaya . Selangor . Kuala Lumpur . Malaysia . 60-12389 0833
ABS Building Products - CHINA . 86-147 1433 8340 / 147 1433 5470
enquiry@absbldg.com . www.absbuildingproducts.com . www.absbldg.com



All rights reserved. No part of this publication may be reproduced, stored in a retrieval system or transmitted, in any form or by any means, electronic, mechanical, photocopying, recording or otherwise, without the prior permission of the copyright owner. Dimensional data is not binding. We also reserve rights to alter specifications and technical data without notice. 201208.

ABS – SINGAPORE • BRUNEI • CHINA • HONG KONG • INDONESIA • MALAYSIA ...

With her headquarter in Singapore, ABS is a Company whose strengths are in quality architectural ironmongery, signages, recycled timber and vinyl flooring.

Since her incorporation in 1987 as ABS-Kimsign (Singapore) Pte Ltd, ABS has undergone a new management restructuring to provide a more comprehensive service and support; not only for our local but our overseas markets as well. Hence, we are now known as

ABS Building Products

Our principle is to provide the necessary service of not just specifying materials required to complete a project development within the stringent budget requirement set by both Architects and Designers for the Owners but also to ensure that all design specifications done meets both Clients/Owners vision and at the same time conforms to the various Building and Safety Codes with practical operational functionality...

Our experiences that has gone into this company spans more than 25 years...in both specifying and managing Commercial, Hospitality, Institutional as well as Residential projects at various stages of construction and even after project's handover.

We have gained invaluable experience supplying to projects in Brunei, China, Hong Kong, Indonesia, Malaysia, Singapore and Thailand.

Our success therefore, lies in our firm belief in specifying quality products, allowing simplicity in design specifications and commitment to resolve any requirement issues and giving you unparallel service and support.

Through supply ironmongery for over 25 years, ABS has also established solid experience on:

1. Electronic Card Access System for Hotels, Condo etc
2. Automatic Sliding / Swing Glass Door Operators
3. Movable Acoustic Wall
4. Toilet Cubicle System / Glass and Compact Laminates
5. Park & Slide / Slide & Fold / Slide & Hide System
6. Metal & Timber Doors
7. Signage
8. Recycled Timber Decking / Cladding / Trellis / Outdoor Furniture
9. Vinyl Flooring
10. Drainage System



Major References

Ironmongery Singapore

- Ang Mo Kio Secondary School
- Bright Vision Hospital
- Bugis Plus
- Bukit Panjang LRT
- Crown Plaza- Changi
- Duchess Condominium
- Hamilton Scotts
- IBIS Hotel
- ITE College East
- JTC – Serangoon / Changi
- KK Women's and Children Hospital
- Lucas Studio
- Maplewood Condominium
- Ministry of Foreign Affairs
- Motorola Factory
- Nanyang Polytechnic
- Nanyang Technological University
- National Dental Centre
- National Eyes Centre
- One North Residence
- Paterson Collection
- Renci Hospital
- Republic Polytechnic
- Royal Park Hotel
- Shaw House
- Singapore American School
- Supreme Court
- Tan Tock Seng Hospital
- Tech Wafer Semi-Con Factory
- Temasek Polytechnic
- Tribeca Condominium
- The Esplanade
- Verdure Condominium
- Viva Condominium

Ironmongery Overseas

- Alila Hotel Bali
- Aman Resort
- Architectural Service Department
- Bayan Tree Hotel Lijiang
- Cocoa Island
- Four Seasons Hotel Bali
- Interlink Development@TYTL
- Kandooma Island
- Kowloon Pier
- Macau Venetian
- MGM Hotel Macau
- Ocean Park
- Open University of Hongkong
- Robertson Quay Hotel
- Shangri-La Hotel
- Westminster Terrace

Signage Singapore / Overseas

- Admore Park
- Almira@35 Sommerville
- Aman Resort Butan
- Ampang Hilir KL
- Ascotts Hotel
- Barclays Bank
- Cairnhill Height
- Carlton Hotel
- Grange
- Hong Leong Building
- Inner City Loft
- International Bearing
- Lan Fong Road HK
- Lanson Place Hotel
- Lighthouse Evangelism
- Ministry of Education

- Ministry of Finance
- Monetary Authority of Singapore
- Mount Alvenia Hospital
- North Spring Bizhub
- National University of Singapore
- One Newton
- P-200 Joint Support Facility
- Paterson Condominium
- Safra @ Telok Blangah
- Salon De Hachi
- Samvo House UK
- School of Arts Singapore
- Seaview Condominium
- Shelford Road 18
- Soitec
- Stevens Loft
- Tanglin Hill Meadows
- The Land Transport Authority
- The Paterson
- The Teneriffe
- Winsland House
- Yi Mei Gardens
- Yio Chu Kang Secondary School
- YOHA@ Jurong East
- Upper Air Observatory

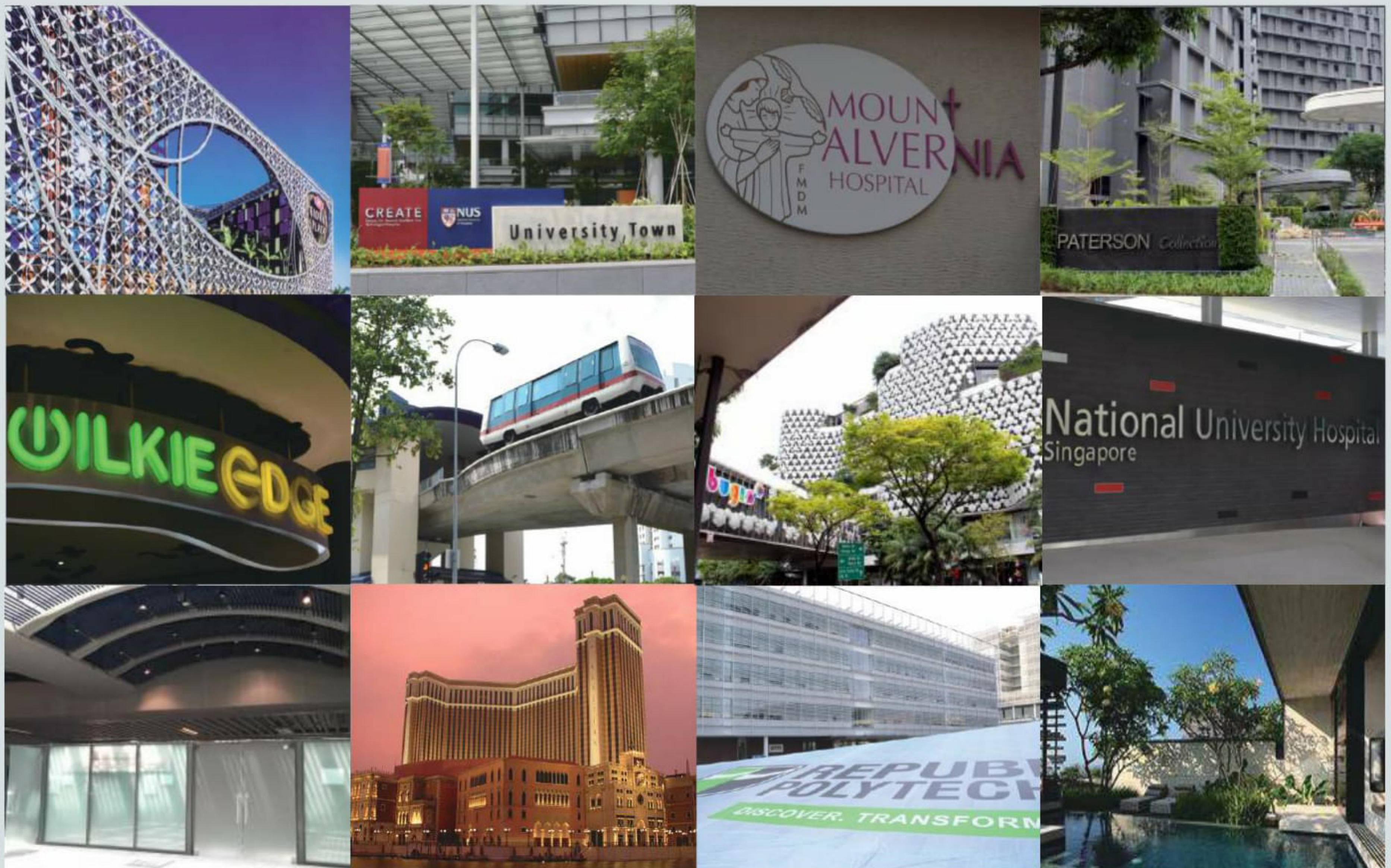
Recycled Timber Singapore

- Almond Estate
- Bukit Merah Playground Blk 131/134
- Changi Business Park
- Clementi Woods
- Chestnut Esatate
- Four Seasons Hotel
- Jalan Membina
- Lakeside
- Mount Senai Bungalow

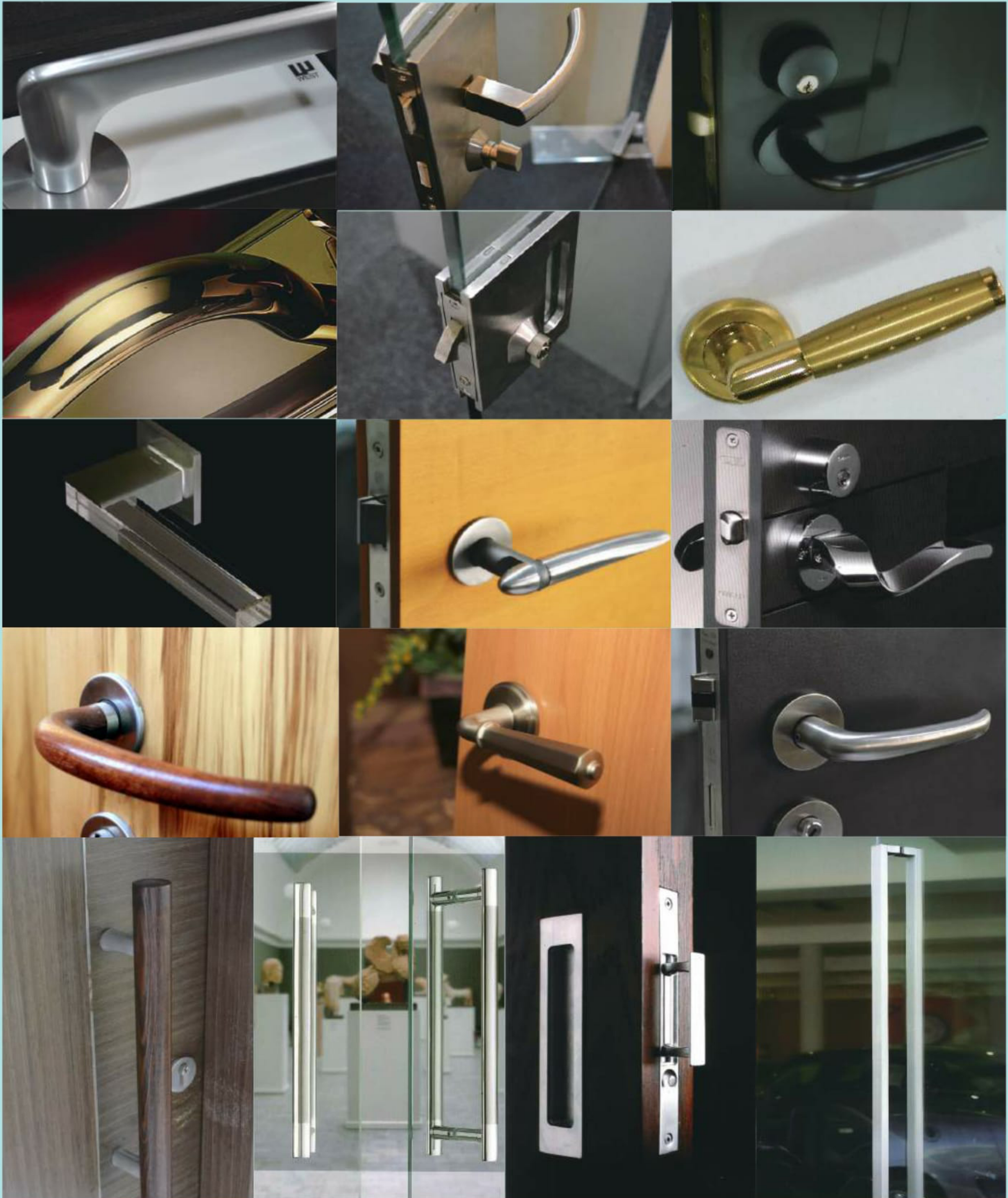
- National University Hospital
- Ocean Financial Centre
- Orchard Scotts Residence
- Pan Pacific Hotel @Marina
- Punggol Sapphire
- Somerset Central Project
- Studio M Hotel
- Sunshine Court
- Telok Blangah Rise
- Tennary Condominium
- The Arte
- Wilkie Egde
- YOHA@Jurong East

Recycled Timber Overseas

- Caritas Loh Kan School
- Gak Su Temple
- Hong Kong Electric
- Hong Kong Jockey Club
- Hotel in Thailand
- Kowloon Station
- Lingnan University Tuen Mum
- Lion Education Nature Centre
- Macau Ferry Terminal
- Olympic Station Sky Garden
- Po Kong Village Road
- Police Rereational Club HK
- Prince Building Central
- Regal HK Hotel
- Sausalito Shatin
- St. Paul's Co-Edu College
- Sugar Beach in Barra Mauritius
- The HK Polytechnic University
- The Vineyard
- Tung Ping Chau Public Pier
- Victoria Shanghai Academy
- The Village in Beijing



Lever & Pull Handle



Comprehensive Range of High Quality and Functional Hardware

- 🔧 Ranging from doors and windows to bathrooms and cupboards
- 🔧 Over 2,000 different designs are available
- 🔧 All ABS items are bent to a radius equal to the diameter of the tube
- 🔧 Made of stainless steel grade 304 or 316 as well as brass, bronze and nylon
- 🔧 ABS fittings are durable maintenance free,hygienic and does not cause allergies associated with other raw materials
- 🔧 It reflects its surroundings as it possesses little color of its own

Key, Cylinder & Electronic Security



Restricted Keying System

- Restricted key blanks available only through ABS
- Can be produced under sub and ground master key system to customers' details, which in turn can incorporate master keying
- In-house cylinder production-allows shorter lead time and faster response time
- A built-in construction keying system within existing cylinder
- User dictated master keying system with allowances for future expansion

Glass Hardware

Metal & Timber Doors



Efficient & Safe

- New product range such as the external glass door fittings are tested up to 1,000,000 cycles

Fire Rated Doors

- from energy efficient openings that improve building envelope thermal performance, to products produced with rapidly renewable materials and recycled content
- conform to SS 332:2007

Door Closer, Sliding Gear & Panic Device



Door Auto, Movable Wall & Special Glass Solutions



One-stop Project Management Solution

- Our qualified project managers and co-ordinators provide checking and supervision of hardware installations
- Immediate attention to any site problems
- stock check and packing of door set

Customised Scheduling Software

- 🔑 Lockwork in-house sorting programme
- 🔑 handles effectively up to 100,000 doors per project / sub-master key group
- 🔑 provides on-line reports, grouping and consolidation of doors
- 🔑 ensures prompt and efficient updating of door schedules

System Sign

- ▷ Tamper proof and vandalism free
- ▷ Wide choice of colours, profiles and typefaces
- ▷ Flexibility of use e.g door, directory or directional sign
- ▷ Ease of maintenance
- ▷ No restriction on the desired size
- ▷ Security fastened with concealed fixings.

Sign Type	Design	Choice of Material	Mounting of Sign
Plan Sign	<ul style="list-style-type: none"> ▷ Timeless, minimalistic design ▷ Flat and mounted 5 mm off the wall 	<ul style="list-style-type: none"> ▷ 5 mm solid aluminium with a silver anodized finish ▷ For Indoor and outdoor 	<ul style="list-style-type: none"> ▷ Mounted on the hidden bracket by custom-made aluminium rivets that mesh with the grooves on the back of the sign
Guide Sign	<ul style="list-style-type: none"> ▷ Timeless, minimalistic design ▷ Mounted 5 mm off the wall 	<ul style="list-style-type: none"> ▷ Extruded aluminium with ▷ Painted finish ▷ For Indoor and outdoor 	
Lock Sign	<ul style="list-style-type: none"> ▷ Classical and simple design ▷ Supplied in the colours of your choice for any environment. 	<ul style="list-style-type: none"> ▷ Extruded aluminium profile is pushed onto a cast mounting bracket ▷ For Indoor and outdoor 	<ul style="list-style-type: none"> ▷ Pushed onto the mounting bracket and is locked so that it cannot be removed by unauthorized persons
Curve Sign	<ul style="list-style-type: none"> ▷ Slightly curved front ▷ Supplied in colours of your choice as well as in maple wood veneer 	<ul style="list-style-type: none"> ▷ Made of lacquered ABS with extruded aluminium mounting brackets 	



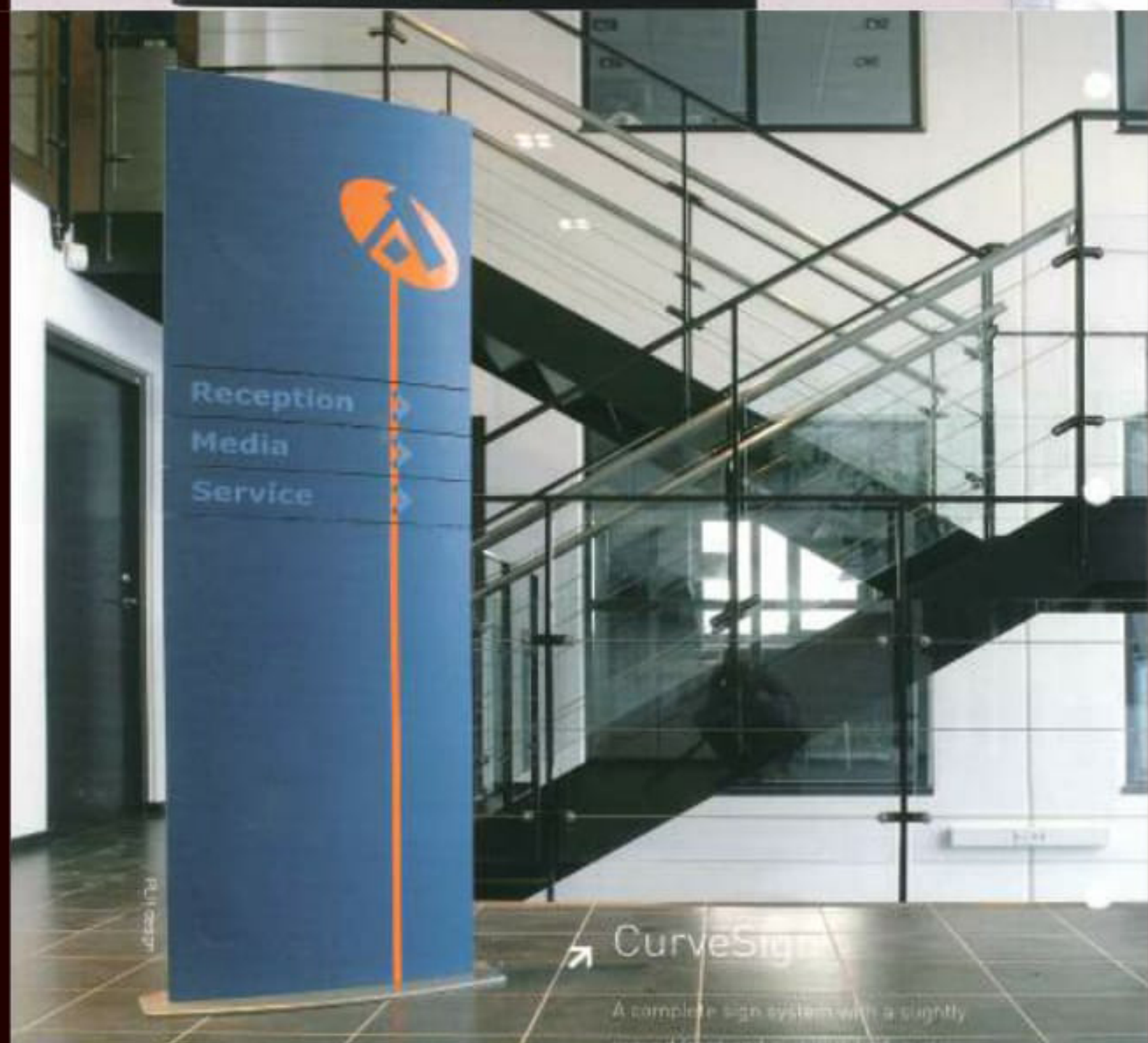
Plan Sign



Guide Sign



Lock Sign



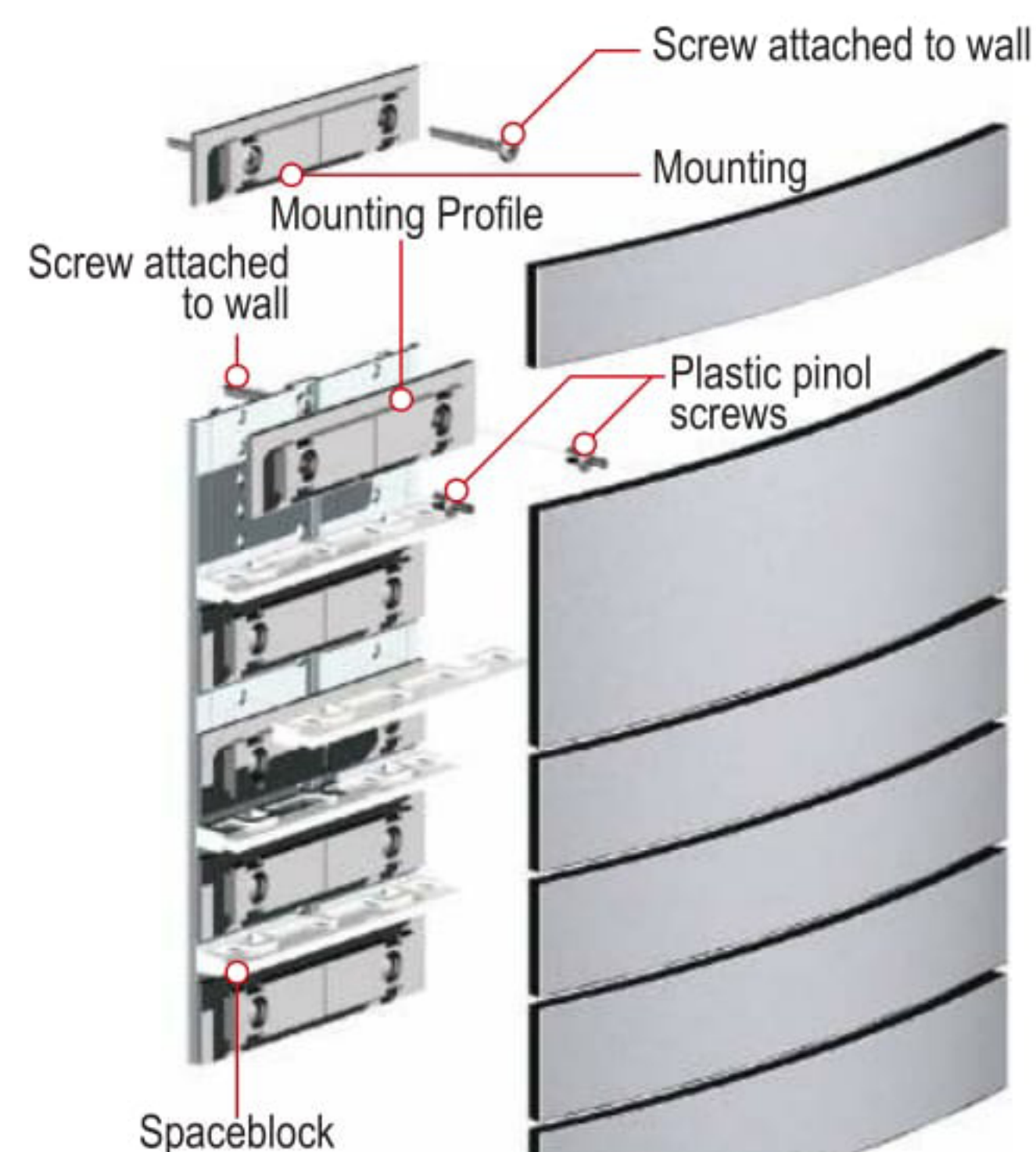
Curve Sign

Magnetic Lock System

- ▶ Easy assembling & dismantling
- ▶ A hidden spring lock integrated in the mounting bracket is activated by the magnetic key.
- ▶ Choices of projection, paperflex, suspended wall sign



Curve Sign Mounting Profile



Dynamic Digital Sign



- ▶ Can be built into wall mounted sign or pylon signage systems
- ▶ Harmonic and homogenous signage solution consisting of both static and electronic signs, matching the building's identity and environment

Way Finding Sign



- ▶ The built-in wayfinding software allows you to guide visitors to the right in-house destination in an easy and efficient manner
- ▶ Movie clips and news tickers can run on the screens alongside or independently of other information

Easy Cleaning and Maintenance

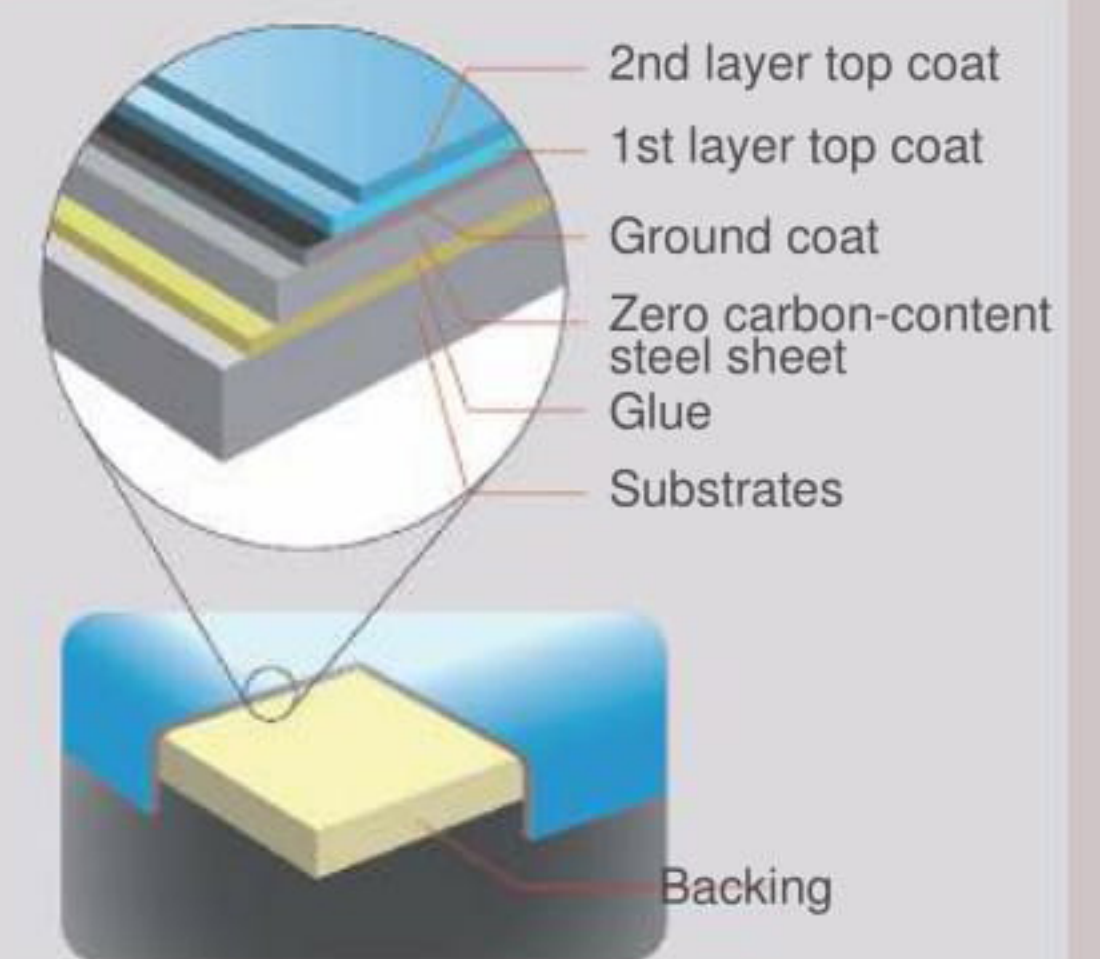
- ▶ Remarkable ability to protect and sustain luminous colours and glossy texture in modern industrial applications.

Color Consistency / Abrasion / Heat / Chemical Resistance

- ▶ Strength of steel with the durability of glass
- ▶ Provide Improved resistance to tough environmental conditions where extra protection against moisture, fire, ultraviolet light, scratching and corrosion
- ▶ 30-year manufacturer's warranty * against peeling, cracking, chipping, hacking and blistering under normal wear-and-tear conditions
- ▶ British Standard BS1344, BS 3830, BS1449, BS4900; Japanese Standard JIS A 6516; PRC Standards 2BY 26001-87

Vitaceous Enamel

Composition of Coating



Signage



Tunnel & Transport



Cladding & Curtain

*T & C apply

Custom-made Sign

- ▶ ABS custom-made signs to best suit the user's needs without compromising on quality
- ▶ Our expertise lines in sky sign, LED sign and company signboard

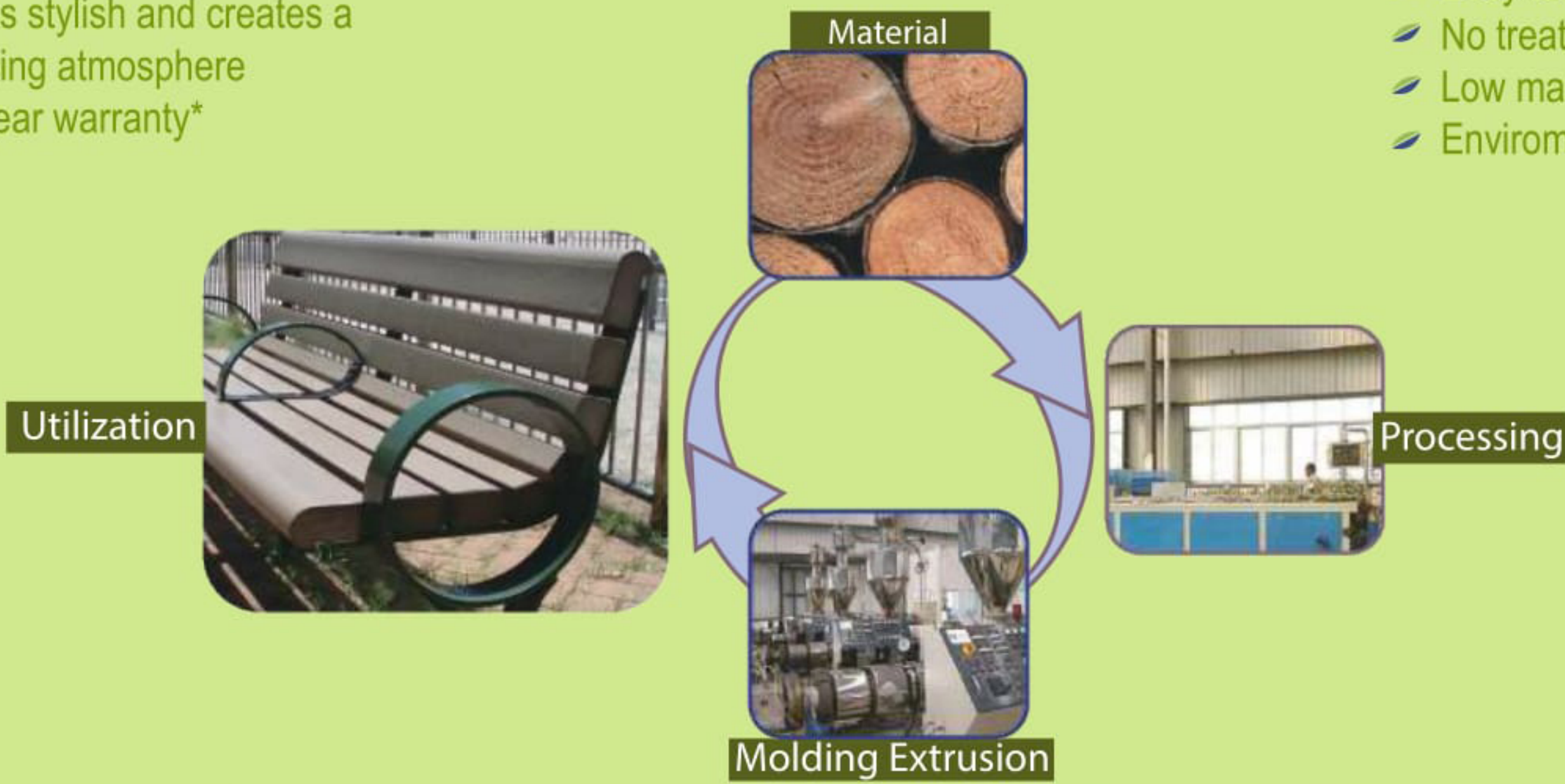


Recycled Timber

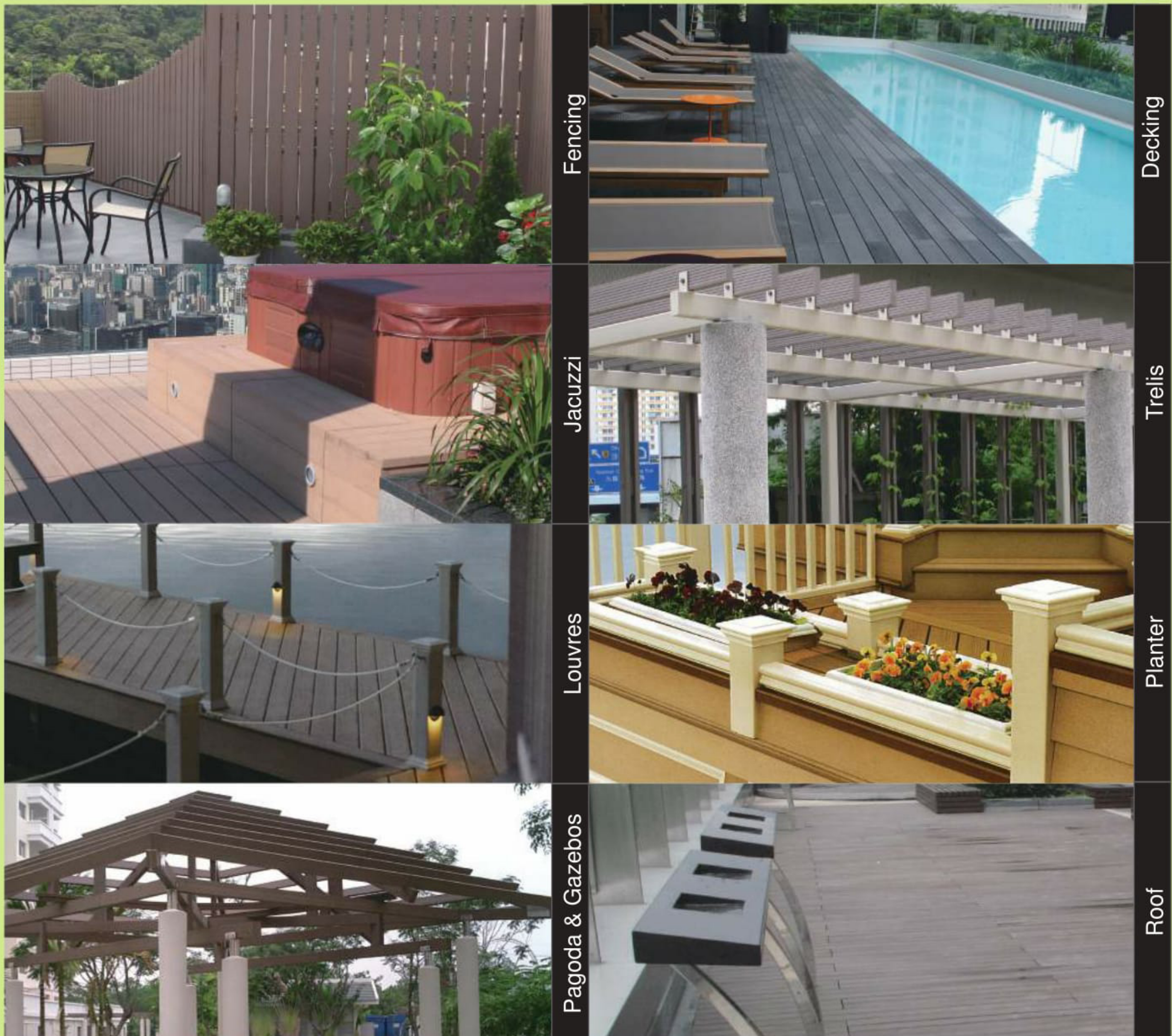
- Made from a mixture of recycled plastic and waste wood fibre, Wood-Thermo Plastic Composite (WPC)
- Recycled plastic such as Polypropylene (PP) and Polyethylene (PE) are used to reinforce the mechanical strength of the use of waste wood fibre collected from construction sites contributes to its wood-like texture
- Looks stylish and creates a relaxing atmosphere
- 10-year warranty*

Why Choose ABS

- High durability
- Splinter free
- Weather/Termite resistant
- Easy to install
- No treatment needed
- Low maintenance cost
- Enviromental friendly



*T & C apply



Major Achievements *

- Green Label Certified by Singapore Environmental Council (SCE)
- Conform to British Standard 476:Part 7:1997
- Exceeds the requirements for homes standard landscape decking in LEED
- EPA's Region 6 Partnership for Environmental Excellence Award 1999
- U.S. patent #5759680 and is covered under NER-596 Award
- U.S. Green Building Council Member

- ISO14001:2008 Certificate
- ICC-ES Certificate
- IQ NET & CQC Certificate
- FSC Certificate
- Sierra Club Award
- NAHB Member

Product Range

*different models vary



Color Code



Material Properties

property	test method	unit	test result
Density	ASTM D792	g/cm3	1.35
Rackwell Hardness	ASTM D785	/	62.3
Compressive Strength	ASTM D695	MPa	30
Tensile Strength at Break	ASTM D638	MPa	10.4
Elongation at Break	ASTM D638	%	1
Modulus of Elasticity	ASTM D790	GPa	2.91
Flexural Strength	ASTM D790	MPa	22
Izod Impact (Notched at 20°C)	ASTM D256	J/m	64.9
Heat Deflection Temperature	ASTM D648	°C	108
Water Absorption (23°C, 24Hr)	ASTM D570	%	1.97

Material Comparison

characteristics	ABS products	natural wood
Thermoplastic Resins Used	Polypropylene. PP/Polyethylene. PE	Not Applicable
Cellulosic Materials Used	Wood Fibre	Wood Fibre
Environmental Friendly	Yes	No
Recycled Content	100%	0%
Natural Wood	Yes	Yes
Painting and Staining	Not Required	Required
Sealing	Not Required	Required
Slip Resistance	Yes	No
Splinter-free	Yes	No
Resistance to Termites	High	Low
Resistance to Marine Borers	High	Low
Resistance to Moisture Damage	High	Low
Resistance to Decay	High	Usually Low
Maintenance	Low	High